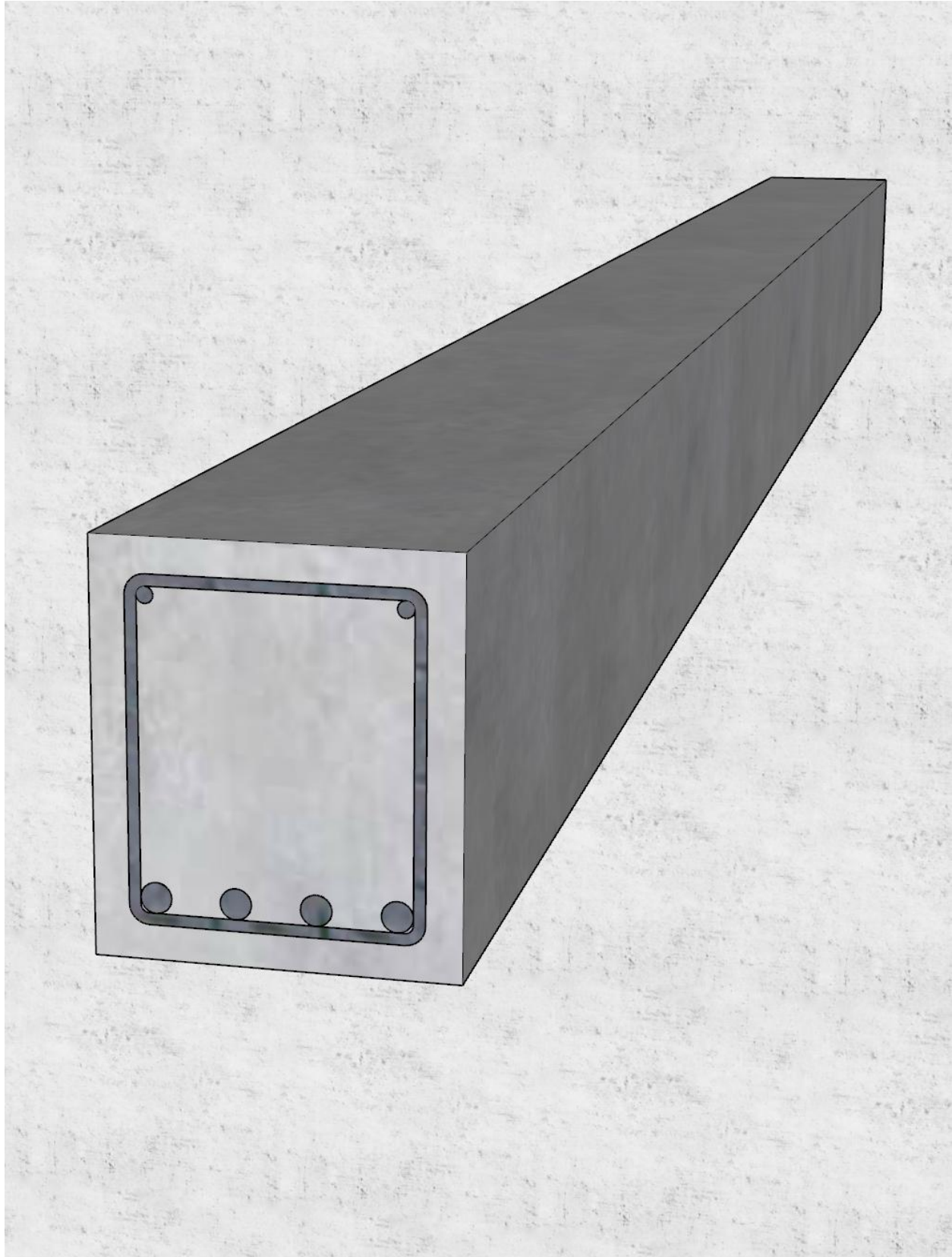


Doubly Reinforced Concrete Beam Design (CSA A23.3-14)



Doubly Reinforced Concrete Beam Design (CSA A32.3-14)

Determine the required reinforcement steel area for a concrete beam carrying service dead and live loads. First, check if singly reinforced beam section is suitable. If not, try doubly reinforced concrete beam section by adding compression reinforcement. It is desired that the section for this beam be tension controlled. Compare the calculated values in the Reference and the hand calculations with values obtained by [spBeam](#) engineering software program from [StructurePoint](#).

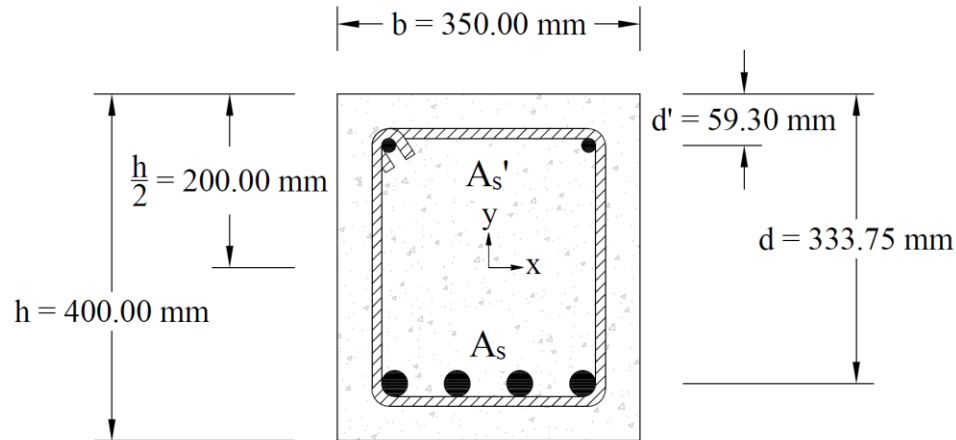


Figure 1 – Doubly Reinforced Concrete Beam Cross-Section

Contents

1. Flexural Design	2
1.1. Required and Provided Reinforcement	2
1.2. Doubly Reinforced Beam Section	4
1.3. Minimum Requirements and Detailing Provisions	6
1.3.1. Skin Reinforcement	6
1.3.2. Flexural Cracking Control	6
1.3.3. Deflection	6
2. Doubly Reinforced Concrete Beam Design – spBeam Software	7
3. Comparison of Design Results	23
4. Conclusions & Observations	23

Code

Design of Concrete Structures (CSA A23.3-14) and Explanatory Notes on CSA Group standard A23.3-14 “Design of Concrete Structures”

Reference

- Reinforced Concrete Structures, 2nd Edition, 2018, Omar Chaallal, Presses de l’Université du Québec, Example 4.4
- [spBeam Engineering Software Program Manual v10.00](#), [STRUCTUREPOINT](#), 2024
- Contact Support@StructurePoint.org to obtain supplementary materials ([spBeam](#) model: DE-Doubly-Reinforced-Beam-CSA-14.slbx)

Design Data

$$f_c' = 30 \text{ MPa}$$

$$f_y = 400 \text{ MPa}$$

Beam span length, $L = 6.00 \text{ m}$

Beam cross-section: $350 \text{ mm} \times 400 \text{ mm}$

Dead loads and live loads resulting in factored moment, $M_f = 230.00 \text{ kN-m}$

Use No. 30M bars for longitudinal reinforcement ($A_s = 700.00 \text{ mm}^2$, $d_b = 29.90 \text{ mm}$)

Use No. 15M bars for compression rebars ($A_s = 200.00 \text{ mm}^2$, $d_b = 16.00 \text{ mm}$)

Use No. 10M bars for stirrups ($A_s = 100.00 \text{ mm}^2$, $d_b = 11.30 \text{ mm}$)

Clear cover = 40.00 mm

CSA A23.3-14 (Table 17)

Solution

The first step in the solution is to determine the ratio of tension reinforcement (ρ) and ratio of tension reinforcement corresponding to balanced section conditions (ρ_b). If $\rho > \rho_b$, the addition of compression reinforcement will be considered. Note that the reference recommends to provide compression reinforcement when the tension reinforcement ratio (ρ) reaches 80% to 85% of ρ_b (80% of ρ_b is used for this example).

1. Flexural Design

1.1. Required and Provided Reinforcement

Using the simplified formula shown in the reference with $M_r = M_f$ and $d = 0.9 \times h$, estimate $A_{s,estimated}$ and deduce the number of layers required.

$$A_{s,estimated} = \frac{M_f}{\phi_s \times f_y \times (0.9 \times 0.9 \times h)} = \frac{230.00}{0.85 \times 400 \times (0.81 \times 400.00)} = 2,087.87 \text{ mm}^2$$

$$\left. \begin{array}{l} A_{s,estimated} = 2,087.87 \text{ mm}^2 \\ b = 350.00 \text{ mm} \end{array} \right\} \rightarrow 3 \text{ No. 30M bars} = 2,100.00 \text{ mm}^2 \text{ in 1 layer}$$

Reinforced Concrete Structures, Chaallal (Table 4.3)

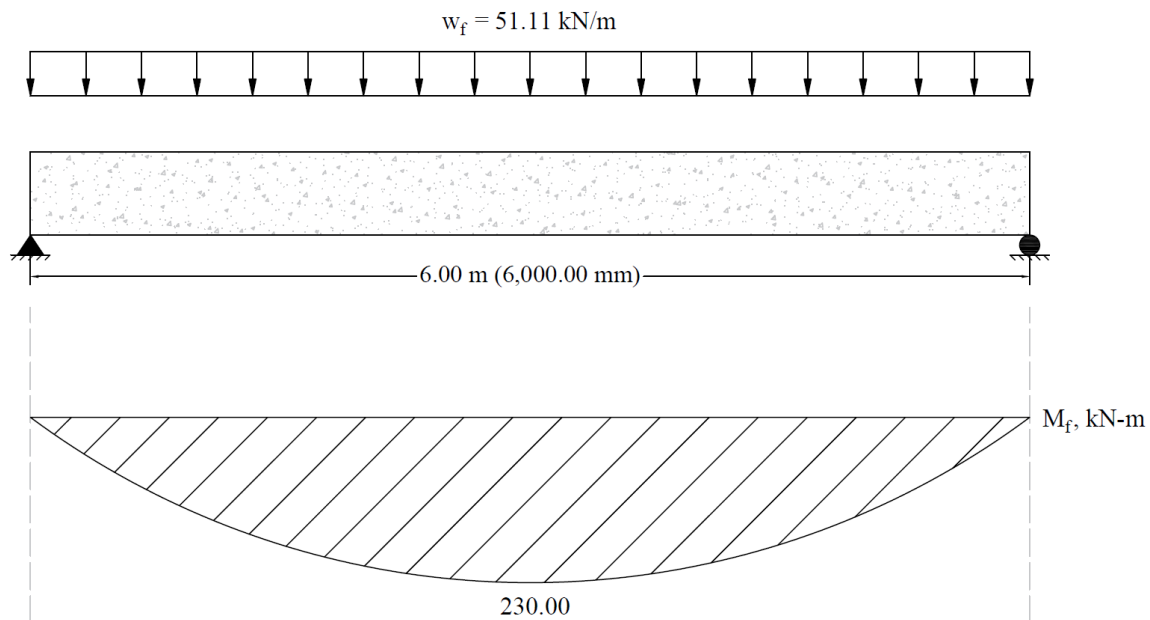


Figure 2 – Bending Moment Diagram

For this beam, the moment at the midspan governs the design.

$$M_f = 230.00 \text{ kN-m}$$

Use 30M bars with 40.00 mm concrete cover per CSA A23.3-14 (Table 17). The distance from extreme compression fiber to the centroid of longitudinal tension reinforcement, d , is calculated below:

$$d = h - \left(\text{clear cover} + d_{b, \text{stirrups}} + \frac{d_{\text{Longitudinal bar}}}{2} \right)$$

$$d = 400.00 - \left(40.00 + 11.30 + \frac{29.90}{2} \right) = 333.75 \text{ mm}$$

$$d' = \text{clear cover} + d_{b, \text{stirrups}} + \frac{d_{\text{Compression rebar}}}{2}$$

$$d' = 40.00 + 11.30 + \frac{16.00}{2} = 59.30 \text{ mm}$$

$$k_r = \frac{M_r}{b \times d^2} = \frac{230.00}{350.00 \times 333.75^2} = 5.90 \text{ MPa}$$

Using Table 4.4 from the reference.

$$\left. \begin{array}{l} f'_c = 30 \text{ MPa} \\ f_y = 400 \text{ MPa} \\ k_r = 5.90 \text{ MPa} \end{array} \right\} \rightarrow \left\{ \begin{array}{l} \rho = 0.0232 \\ \rho_b = 0.0263 \end{array} \right.$$

Reinforced Concrete Structures, Chaallal (Table 4.4)

Assume that $\rho_1 = 80\% \times \rho_b$

Reinforced Concrete Structures, Chaallal (Table 4.4)

$$\rho_1 = 0.80 \times \rho_b = 0.80 \times 0.0263 = 0.0210$$

$$\rho = 0.0232 > 0.0210 \rightarrow \text{Compression reinforcement recommended}$$

$$A_{s1} = \rho_1 \times b \times d = 0.0210 \times 350.00 \times 333.75 = 2,457.74 \text{ mm}^2$$

$$\therefore \phi_c = 0.65$$

CSA A23.3-14 (8.4.2)

$$\therefore \phi_s = 0.85$$

CSA A23.3-14 (8.4.3)

$$a = \frac{\phi_s \times f_y \times A_{s1}}{\alpha_1 \times \phi_c \times f'_c \times b} = \frac{0.85 \times 400 \times 2,457.74}{0.805 \times 0.65 \times 30 \times 350.00} = 152.10 \text{ mm}$$

Where:

$$\alpha_1 = 0.85 - 0.0015 \times f'_c = 0.85 - 0.0015 \times 30 = 0.805 > 0.67$$

CSA A23.3-14 (10.1.7)

$$\beta_1 = 0.97 - 0.0025 \times f'_c = 0.97 - 0.0025 \times 30 = 0.895 > 0.67$$

CSA A23.3-14 (10.1.7)

The corresponding nominal moment is:

$$M_{r1} = \phi_s \times f_y \times A_{s1} \times \left(d - \frac{a}{2} \right)$$

$$M_{r1} = 0.85 \times 400 \times 2,457.74 \times \left(333.75 - \frac{152.10}{2} \right) = 215.34 \text{ kN-m} < M_f = 230.00 \text{ kN-m}$$

Therefore, compression reinforcement is needed to increase the amount of tension reinforcement enough to achieve the required strength.

1.2. Doubly Reinforced Beam Section

$$M_{r2} = M_f - M_{r1} = 230.00 - 215.34 = 14.66 \text{ kN-m}$$

$$A'_{s,required} = \frac{M_{r2,required}}{\phi_s \times f_y \times (d - d')} = \frac{14.66}{0.85 \times 400 \times (333.75 - 59.30)} = 157.06 \text{ mm}^2$$

$$A_{s,required} = A_{s1} + A'_{s,required} = 2,457.74 + 157.06 = 2,614.80 \text{ mm}^2$$

Provide 4 – No. 30M bars ($A_{s,provided} = 700.00 \text{ mm}^2$ per bar) for longitudinal reinforcement.

$$A_{s,provided} = 4 \times 700.00 = 2,800.00 \text{ mm}^2 > A_{s,required} = 2,614.80 \text{ mm}^2$$

Provide 2 – No. 15M bars ($A'_{s,provided} = 200.00 \text{ mm}^2$ per bar) for compression rebars.

$$A'_{s,provided} = 2 \times 200.00 = 400.00 \text{ mm}^2 > A'_{s,required} = 157.06 \text{ mm}^2$$

The minimum reinforcement shall not be less than

$$A_{s,min} = \frac{0.2 \times \sqrt{f'_c} \times b \times h}{f_y} = \frac{0.2 \times \sqrt{30} \times 350.00 \times 400.00}{400} = 383.41 \text{ mm}^2$$

CSA A23.3-14 (10.5.1.2)

$$A_{s,min} = 383.41 \text{ mm}^2 < A_{s,provided} = 2,800.00 \text{ mm}^2$$

$$\rho = \frac{A_{s,provided}}{b \times d} = \frac{2,800.00}{350.00 \times 334.00} = 0.0240$$

$$\rho' = \frac{A'_{s,provided}}{b \times d} = \frac{400.00}{350.00 \times 333.75} = 0.0034$$

$$\rho_{max} = \rho_b + \rho' = 0.0263 + 0.0034 = 0.0297 > \rho = 0.0240$$

$$A_{s1,provided} = A_{s,provided} - A'_{s,provided} = 2,800.00 - 400.00 = 2,400.00 \text{ mm}^2$$

$$a = \frac{\phi_s \times f_y \times A_{s1,provided}}{\alpha_1 \times \phi_c \times f'_c \times b} = \frac{0.85 \times 400 \times 2,400.00}{0.805 \times 0.65 \times 30 \times 350.00} = 148.52 \text{ mm}$$

$$c = \frac{a}{\beta_1} = \frac{148.52}{0.895} = 165.95 \text{ mm} \quad \text{CSA A23.3-14 (10.1.7)}$$

Where c is the distance from the extreme compressive fiber to the neutral axis. CSA A23.3-14 (3.2)

$$\varepsilon_{cu} = 0.0035 \quad \text{CSA A23.3-14 (10.1.3)}$$

$$\varepsilon_y = \frac{f_y}{E_s} = \frac{400}{200,000.00} = 0.0020 \quad \text{CSA A23.3-14 (8.5.3.2)}$$

$$\varepsilon'_s = \frac{c - d'}{c} \times \varepsilon_{cu} = \frac{165.95 - 59.30}{165.95} \times 0.0035 = 0.0022 > \varepsilon_y = 0.0020$$

Since $\varepsilon'_s > \varepsilon_y \rightarrow A'_s$ is in the plastic stage.

$$M_r = \phi_s \times f_y \times \left[(A_s - A'_s) \times \left(d - \frac{a}{2} \right) + A'_s \times (d - d') \right]$$

$$M_r = 0.85 \times 400 \times \left[(2,800.00 - 400.00) \times \left(333.75 - \frac{148.52}{2} \right) + 400.00 \times (333.75 - 59.30) \right] = 249.07 \text{ kN-m}$$

$$M_r = 249.07 \text{ kN-m} > M_f = 230.00 \text{ kN-m} \quad \text{o.k.}$$

1.3. Minimum Requirements and Detailing Provisions

1.3.1. Skin Reinforcement

$h = 400.00 \text{ mm} < 750.00 \text{ mm}$ Skin reinforcement is not required CSA A23.3-14 (10.6.2)

1.3.2. Flexural Cracking Control

Check the requirement for distribution of flexural reinforcement to control flexural cracking:

$$z = f_s \times (d_c \times A)^{1/3} \quad \text{CSA A23.3-14 (10.6.1)}$$

Use $f_s = 0.6 \times f_y = 240 \text{ MPa}$ CAC Concrete Design Handbook – 4th Edition (2.3.2)

$$X = d_c = h - d = 400.00 - 333.75 = 66.25 \text{ mm}$$

$$A = \frac{2 \times X \times b}{n} = \frac{2 \times 66.25 \times 350.00}{4} = 11,593.75 \text{ mm}^2$$

$$z = 240 \times (66.25 \times 11,593.75)^{1/3} = 21,979.33 \text{ N/mm} < 25,000.00 \text{ N/mm} \quad \text{o.k.}$$

1.3.3. Deflection

$$L_n = L = 6,000.00 \text{ mm}$$

$$h_{\min} = \frac{L_n}{16} \quad \text{CSA A23.3-14 (Table 9.2)}$$

$$h_{\min} = \frac{6,000.00}{16} = 375.00 \text{ mm} < h = 400.00 \text{ mm} \quad \text{o.k.}$$

2. Doubly Reinforced Concrete Beam Design – spBeam Software

[spBeam](#) is widely used for analysis, design and investigation of beams, and one-way slab systems (including standard and wide module joist systems) per latest American (ACI 318) and Canadian (CSA A23.3) codes. [spBeam](#) can be used for new designs or investigation of existing structural members subjected to flexure, shear, and torsion loads. With capacity to integrate up to 20 spans and two cantilevers of wide variety of floor system types, [spBeam](#) is equipped to provide cost-effective, accurate, and fast solutions to engineering challenges.

[spBeam](#) provides top and bottom bar details including development lengths and material quantities, as well as live load patterning and immediate and long-term deflection results. Using the moment redistribution feature engineers can deliver safe designs with savings in materials and labor. Engaging this feature allows up to 20% reduction of negative moments over supports reducing reinforcement congestions in these areas.

Beam analysis and design requires engineering judgment in most situations to properly simulate the behavior of the targeted beam and take into account important design considerations such as: designing the beam as rectangular or T-shaped sections; using the effective flange width or the center-to-center distance between the beam and the adjacent beams. Regardless which of these options is selected, [spBeam](#) provide users with options and flexibility to:

1. Design the beam as a rectangular cross-section or a T-shaped section.
2. Use the effective or full beam flange width.
3. Include the flanges effects in the deflection calculations.
4. Invoke moment redistribution to lower negative moments
5. Using gross (uncracked) or effective (cracked) moment of inertia
6. Design the beam as singly or doubly reinforced section.

The investigation mode is selected in the creation of the [spBeam](#) model for comparison purposes (to reflect the assumption made by the reference to enforce the compression reinforcement when ρ reaches 80% of ρ_b).

For illustration and comparison purposes, the [following figures](#) provide a sample of the input modules and results obtained from an [spBeam](#) model created for the doubly reinforced beam discussed in this example.

spBeam - DE-Doubly-Reinforced-Beam-CSA-14.slbx

File Home

Project Define Grid Select Spans Supports Loads Rebars **Solve** Results Tables Reporter Display Viewports Settings

SOLVE

Run

Design options Deflection options

▼ **Reinforcement**

☒ **Compression reinforcement**

☐ Decremental reinforcement design

☐ Combined M-V-T reinforcement design

▼ **Torsion Analysis and Design**

Torsion type: ☒ Equilibrium ☐ Compatibility

Stirrups in flanges: ☐ Yes ☒ No

▼ **Beam Design**

☐ Effective flange width

☐ Rigid beam-column joint

▼ **Live Loads**

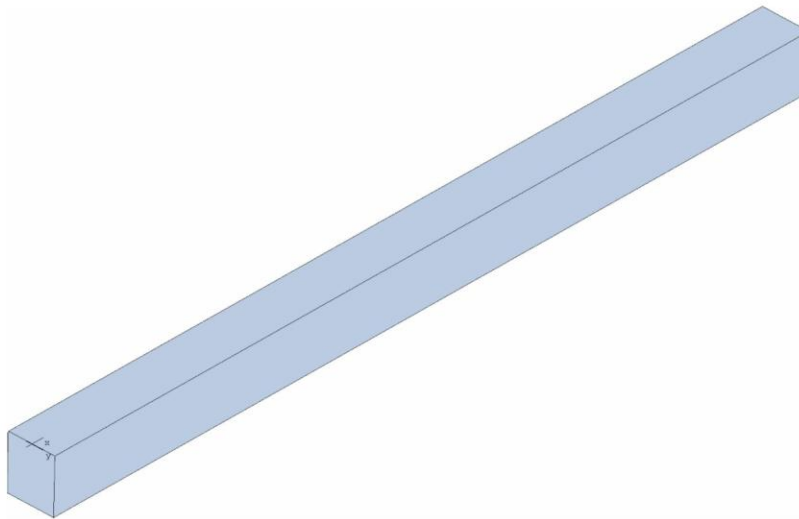
Live load pattern ratio: 0.00 %

Model View (Extrude)

Units: Metric



spBeam v10.00 (TM)
A Computer Program for Analysis, Design, and Investigation of
Reinforced Concrete Beams and One-way Slab Systems
Copyright © 1988-2024, STRUCTUREPOINT, LLC.
All rights reserved



StructurePoint
Licensee stated above acknowledges that STRUCTUREPOINT (SP) is not and cannot be responsible for either the accuracy or adequacy of the material supplied as input for processing by the spBeam computer program. Furthermore, STRUCTUREPOINT neither makes any warranty expressed nor implied with respect to the correctness of the output prepared by the spBeam program. Although STRUCTUREPOINT has endeavored to produce spBeam error free the program is not and cannot be certified infallible. The final and only responsibility for analysis, design and engineering documents is the licensee's. Accordingly, STRUCTUREPOINT disclaims all responsibility in contract, negligence or other tort for any analysis, design or engineering documents prepared in connection with the use of the spBeam program. Licensed to: StructurePoint, LLC. License ID: 00000-0000000-4-1C985-1C985

Contents

1. Input Echo.....	3
1.1. General Information.....	3
1.2. Solve Options.....	3
1.3. Material Properties.....	3
1.3.1. Concrete: Slabs / Beams.....	3
1.3.2. Concrete: Columns.....	3
1.3.3. Reinforcing Steel.....	3
1.4. Reinforcement Database.....	4
1.5. Span Data.....	4
1.5.1. Slabs.....	4
1.5.2. Ribs and Longitudinal Beams.....	4
1.6. Support Data.....	4
1.6.1. Columns.....	4
1.6.2. Boundary Conditions.....	4
1.7. Load Data.....	4
1.7.1. Load Cases and Combinations.....	4
1.7.2. Line Loads.....	4
1.8. Reinforcement Criteria.....	5
1.8.1. Slabs and Ribs.....	5
1.8.2. Beams.....	5
1.9. Reinforcing Bars.....	5
1.9.1. Top Bars.....	5
1.9.2. Bottom Bars.....	5
1.9.3. Transverse Reinforcement.....	5
2. Design Results.....	5
2.1. Flexural Capacity.....	5
2.2. Longitudinal Beam Transverse Reinforcement Capacity.....	6
2.2.1. Section Properties.....	6
2.2.2. Beam Transverse Reinforcement Capacity.....	6
2.3. Slab Shear Capacity.....	6
2.4. Material TakeOff.....	6
2.4.1. Reinforcement in the Direction of Analysis.....	6
3. Deflection Results: Summary.....	6
3.1. Section Properties.....	6
3.1.1. Frame Section Properties.....	6
3.1.2. Frame Effective Section Properties.....	7
3.2. Instantaneous Deflections.....	7
3.2.1. Extreme Instantaneous Frame Deflections and Corresponding Locations.....	7
3.3. Long-term Deflections.....	7
3.3.1. Long-term Deflection Factors.....	7
3.3.2. Extreme Long-term Frame Deflections and Corresponding Locations.....	7
4. Screenshots.....	8
4.1. Extrude 3D view.....	8
4.2. Loads - Case A - Live.....	9
4.3. Internal Forces.....	10
4.4. Moment Capacity.....	11
4.5. Shear Capacity.....	12
4.6. Deflection.....	13
4.7. Reinforcement.....	14

STRUCTUREPOINT - spBeam v10.00 (TM)
Licensed to: StructurePoint, LLC. License ID: 00000-0000000-4-1C985-1C985
C:\StructurePoint\spBeam\DE-Doubly-Reinforced-Beam-CSA-14.slbx

Page | 3
12/29/2025
12:47 PM

1. Input Echo

1.1. General Information

File Name	C:\Struc...\DE-Doubly-Reinforced-Beam-CSA-14.slbx
Project	Doubly Reinforced Beam
Frame	
Engineer	SP
Code	CSA A23.3-14
Units	Metric
Reinforcement Database	CSA G30.18
Mode	Investigation
Number of supports =	2
Floor System	One-Way/Beam

1.2. Solve Options

Live load pattern ratio = 0%
Deflections are based on cracked section properties.
In negative moment regions, Ig and Mcr DO NOT include flange/slab contribution (if available)
Long-term deflections are calculated for load duration of 60 months.
0% of live load is sustained.
Compression reinforcement calculations selected.
Default incremental rebar design selected.
Combined M-V-T reinforcement design NOT selected.
Moment redistribution NOT selected.
Effective flange width calculations NOT selected.
Rigid beam-column joint NOT selected.
Torsion analysis and design NOT selected.

1.3. Material Properties

1.3.1. Concrete: Slabs / Beams

w_c	2400 kg/m ³
f'_c	30 MPa
E_c	26621.2 MPa
f_r	1.64317 MPa
Precast concrete	No

1.3.2. Concrete: Columns

w_c	2400 kg/m ³
f'_c	30 MPa
E_c	26621.2 MPa
f_r	3.28634 MPa
Precast concrete	No

1.3.3. Reinforcing Steel

f_y	400 MPa
f_{yt}	400 MPa
E_s	200000 MPa

STRUCTUREPOINT - spBeam v10.00 (TM)
Licensed to: StructurePoint, LLC. License ID: 00000-0000000-4-1C985-1C985
C:\StructurePoint\spBeam\DE-Doubly-Reinforced-Beam-CSA-14.slbx

Page | 4
12/29/2025
12:47 PM

Epoxy coated bars ☐ No

1.4. Reinforcement Database

Size	Db mm	Ab mm ²	Wb kg/m	Size	Db mm	Ab mm ²	Wb kg/m
#10	11	100	1	#15	16	200	2
#20	20	300	2	#25	25	500	4
#30	30	700	5	#35	36	1000	8
#45	44	1500	12	#55	56	2500	20

1.5. Span Data

1.5.1. Slabs

Notes:

Span	Loc	L1 m	t mm	wL m	wR m	H _{min} mm
1	Int	6.000	0	0.175	0.175	0 ---

1.5.2. Ribs and Longitudinal Beams

Notes:

Span	Ribs			Beams		Span H _{min} mm
	b mm	h mm	Sp mm	b mm	h mm	
1	0	0	0	350	400	375

1.6. Support Data

1.6.1. Columns

Support	c1a mm	c2a mm	Ha m	c1b mm	c2b mm	Hb m	Red %
1	0	0	0.000	0	0	0.000	0
2	0	0	0.000	0	0	0.000	0

1.6.2. Boundary Conditions

Support	Spring		Far End	
	K _x kN/mm	K _y kN-mm/rad	Above	Below
1	0.00	0.00	Fixed	Fixed
2	0.00	0.00	Fixed	Fixed

1.7. Load Data

1.7.1. Load Cases and Combinations

Case	Live
Type	LIVE
U1	1.000

1.7.2. Line Loads

Case/Patt	Span	Wa kN/m	La m	Wb kN/m	Lb m
Live	1	51.11	0.000	51.11	6.000

STRUCTUREPOINT - spBeam v10.00 (TM)
Licensed to: StructurePoint, LLC. License ID: 00000-0000000-4-1C985-1C985
C:\StructurePoint\spBeam\DE-Doubly-Reinforced-Beam-CSA-14.slbx

Page | 5
12/29/2025
12:47 PM

1.8. Reinforcement Criteria

1.8.1. Slabs and Ribs

	Units	Top Bars		Bottom Bars	
		Min.	Max.	Min.	Max.
Bar Size		#20	#35	#20	#35
Bar spacing	mm	30	450	30	450
Reinf ratio	%	0.20	5.00	0.20	5.00
Clear Cover	mm	40		40	

There is NOT more than 300 mm of concrete below top bars.

1.8.2. Beams

	Units	Top Bars		Bottom Bars		Stirrups	
		Min.	Max.	Min.	Max.	Min.	Max.
Bar Size		#15	#15	#30	#30	#10	#10
Bar spacing	mm	30	450	30	450	150	450
Reinf ratio	%	0.20	5.00	0.20	5.00		
Clear Cover	mm	51		51			
Layer dist.	mm	30		30			
No. of legs						2	6
Side cover	mm					40	
1st Stirrup	mm					75	

There is NOT more than 300 mm of concrete below top bars.

1.9. Reinforcing Bars

1.9.1. Top Bars

Notes:

Span	Left			Continuous		Right		
	Bars	Length	Cover	Bars	Cover	Bars	Length	Cover
		m	mm		mm		m	mm
1				2-#15	51			

1.9.2. Bottom Bars

Notes:

Span	Continuous		Discontinuous			
	Bars	Cover	Bars	Length	Start	Cover
		mm		m	m	mm
1	4-#30	51				

1.9.3. Transverse Reinforcement

Span Stirrups (2 legs each unless otherwise noted)

1 10-#10 @ 186 + <-- 2325 --> + 10-#10 @ 186

2. Design Results

2.1. Flexural Capacity

Span	x m	Top					Bottom				
		$A_{s,top}$ mm ²	ΦM_n^- kNm	M_u^- kNm	Comb Pat	Status	$A_{s,bot}$ mm ²	ΦM_n^+ kNm	M_u^+ kNm	Comb Pat	Status
1	0.000	400	-48.97	0.00	U1 All	OK	2800	248.33	0.00	U1 All	OK
	2.100	400	-48.97	0.00	U1 All	OK	2800	248.33	209.30	U1 All	OK
	3.000	400	-48.97	0.00	U1 All	OK	2800	248.33	230.00	U1 All	OK
	3.900	400	-48.97	0.00	U1 All	OK	2800	248.33	209.30	U1 All	OK

STRUCTUREPOINT - spBeam v10.00 (TM)
Licensed to: StructurePoint, LLC. License ID: 00000-0000000-4-1C985-1C985
C:\StructurePoint\spBeam\DE-Doubly-Reinforced-Beam-CSA-14.slbx

Page | 6
12/29/2025
12:47 PM

Span	x m	Top				Comb Pat	Status	Bottom				Comb Pat	Status
		A _{s,top} mm ²	ΦM _n ⁺ kNm	M _u ⁻ kNm				A _{s,bot} mm ²	ΦM _n ⁺ kNm	M _u ⁺ kNm			
	6.000	400	-48.97	0.00		U1 All	OK	2800	248.33	0.00		U1 All	OK

2.2. Longitudinal Beam Transverse Reinforcement Capacity

2.2.1. Section Properties

Span	d _v mm	(A _v /s) _{min} mm ² /mm	ΦV _c kN	V _{r,max} kN
1	300.4	0.288	67.37	512.51

2.2.2. Beam Transverse Reinforcement Capacity

Span	Start m	End m	Required				Provided				
			X _u m	V _u kN	Comb/Patt	A _v /s mm ² /mm	Reqd/Min	A _v mm ²	Sp mm	A _v /s mm ² /mm	ΦV _n kN
1	0.000	0.075	0.300	137.98	U1/All	-----	-----	-----	-----	-----	-----
	0.075	1.838	0.300	137.98	U1/All	0.484	1.68	200.0	186	1.078	224.58
	1.838	4.162	1.838	59.41	U1/All	0.000	0.00	-----	-----	-----	66.20
	4.162	5.925	5.700	137.98	U1/All	0.484	1.68	200.0	186	1.078	224.58
	5.925	6.000	5.700	137.98	U1/All	-----	-----	-----	-----	-----	-----

2.3. Slab Shear Capacity

Span	b mm	d _v mm	β	V _{ratio}	ΦV _c kN	V _u kN	X _u m
1	--- Not checked ---						

2.4. Material TakeOff

2.4.1. Reinforcement in the Direction of Analysis

Top Bars	18.8 kg <=>	3.14 kg/m <=>	8.971 kg/m ²
Bottom Bars	131.9 kg <=>	21.98 kg/m <=>	62.800 kg/m ²
Stirrups	18.5 kg <=>	3.09 kg/m <=>	8.822 kg/m ²
Total Steel	169.2 kg <=>	28.21 kg/m <=>	80.593 kg/m ²
Concrete	0.8 m ³ <=>	0.14 m ³ /m <=>	0.400 m ³ /m ²

3. Deflection Results: Summary

3.1. Section Properties

3.1.1. Frame Section Properties

Notes:

M+ve values are for positive moments (tension at bottom face).

M-ve values are for negative moments (tension at top face).

Span Zone	M _{+ve}			M _{-ve}		
	I _g mm ⁴	I _{cr} mm ⁴	M _{cr} kNm	I _g mm ⁴	I _{cr} mm ⁴	M _{cr} kNm
1 Left	1866666666.67	1124179483.35	15.34	1866666666.67	260205952.21	-15.34
Midspan	1866666666.67	1124179483.35	15.34	1866666666.67	260205952.21	-15.34
Right	1866666666.67	1124179483.35	15.34	1866666666.67	260205952.21	-15.34

STRUCTUREPOINT - spBeam v10.00 (TM)
Licensed to: StructurePoint, LLC. License ID: 00000-0000000-4-1C985-1C985
C:\StructurePoint\spBeam\DE-Doubly-Reinforced-Beam-CSA-14.slbx

Page | 7
12/29/2025
12:47 PM

3.1.2. Frame Effective Section Properties

Span Zone	Weight	Load Level					
		Dead		Sustained		Dead+Live	
		M _{max} kNm	I _e mm ⁴	M _{max} kNm	I _e mm ⁴	M _{max} kNm	I _e mm ⁴
1 Middle	1.000	0.00	1866666666.67	0.00	1866666666.67	230.00	1124399605.76
Span Avg	----	----	1866666666.67	----	1866666666.67	----	1124399605.76

3.2. Instantaneous Deflections

3.2.1. Extreme Instantaneous Frame Deflections and Corresponding Locations

Span	Direction	Value	Units	Dead	Live			Total	
					Sustained	Unsustained	Total	Sustained	Dead+Live
1	Down	Def	mm	---	---	28.81	28.81	---	28.81
		Loc	m	---	---	3.000	3.000	---	3.000
	Up	Def	mm	---	---	---	---	---	---
		Loc	m	---	---	---	---	---	---

3.3. Long-term Deflections

3.3.1. Long-term Deflection Factors

Notes:

Deflection multiplier, Lambda, depends on moment sign at sustained load level and Rho' in given zone.

Time dependant factor for sustained loads = 2.000

Span Zone	M ₊ ve					M ₋ ve				
	A _{s,top} mm ²	b mm	d mm	Rho' %	Lambda	A _{s,bot} mm ²	b mm	d mm	Rho' %	Lambda
1 Midspan	400	350	341	0.335	1.713	2800	350	334	2.397	0.910

3.3.2. Extreme Long-term Frame Deflections and Corresponding Locations

Notes:

Incremental deflections due to creep and shrinkage (cs) based on sustained load level values.

Incremental deflections after partitions are installed can be estimated by deflections due to:

- creep and shrinkage plus unsustained live load (cs+lu), if live load applied before partitions,
- creep and shrinkage plus live load (cs+l), if live load applied after partitions.

Total deflections consist of dead, live, and creep and shrinkage deflections.

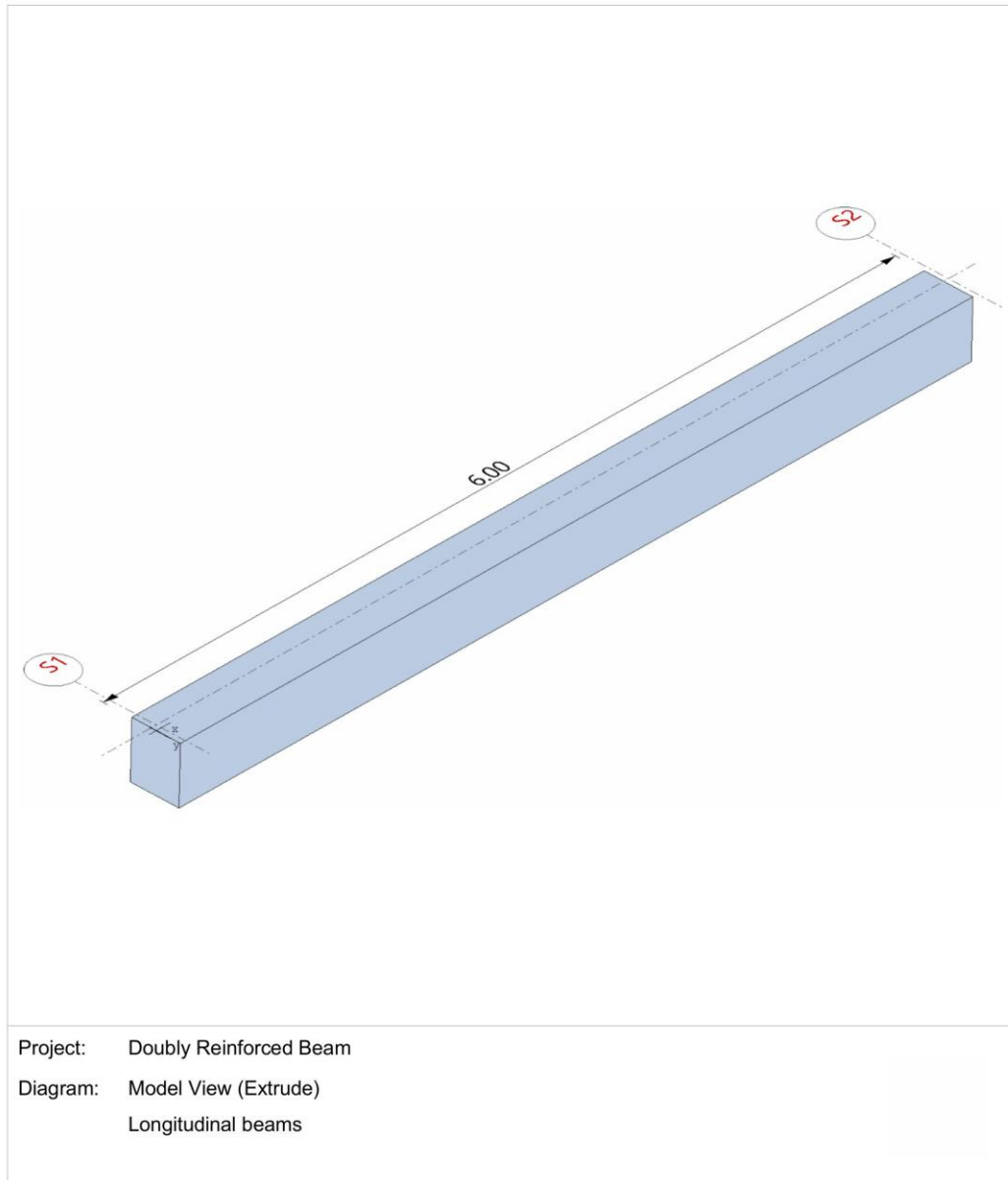
Span	Direction	Value	Units	cs	cs+lu	cs+l	Total
1	Down	Def	mm	---	28.81	28.81	28.81
		Loc	m	---	3.000	3.000	3.000
	Up	Def	mm	---	---	---	---
		Loc	m	---	---	---	---

STRUCTUREPOINT - spBeam v10.00 (TM)
Licensed to: StructurePoint, LLC. License ID: 00000-0000000-4-1C985-1C985
C:\StructurePoint\spBeam\DE-Doubly-Reinforced-Beam-CSA-14.slbx

Page | 8
12/29/2025
12:47 PM

4. Screenshots

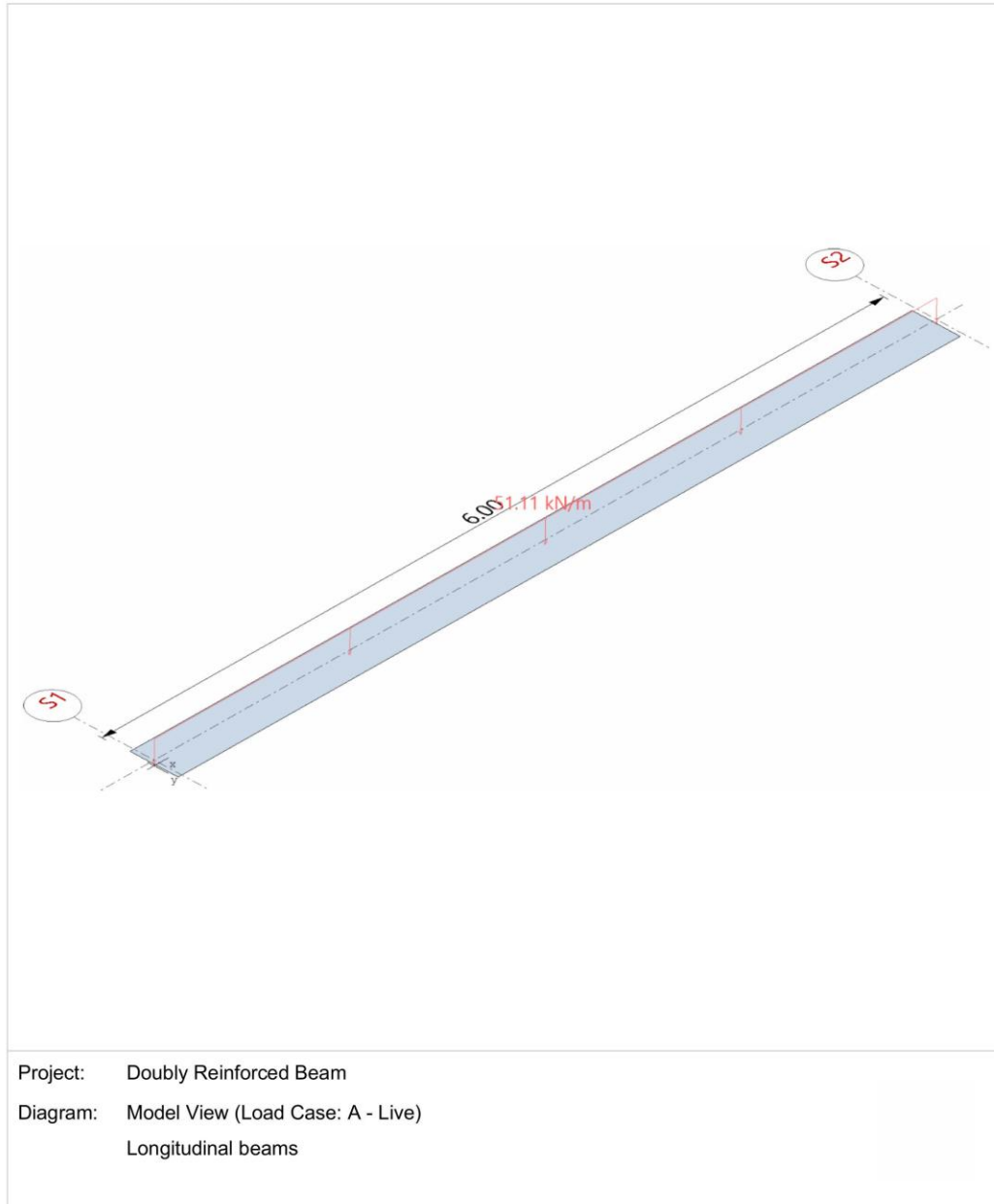
4.1. Extrude 3D view



STRUCTUREPOINT - spBeam v10.00 (TM)
Licensed to: StructurePoint, LLC. License ID: 00000-0000000-4-1C985-1C985
C:\StructurePoint\spBeam\DE-Doubly-Reinforced-Beam-CSA-14.slbx

Page | 9
12/29/2025
12:47 PM

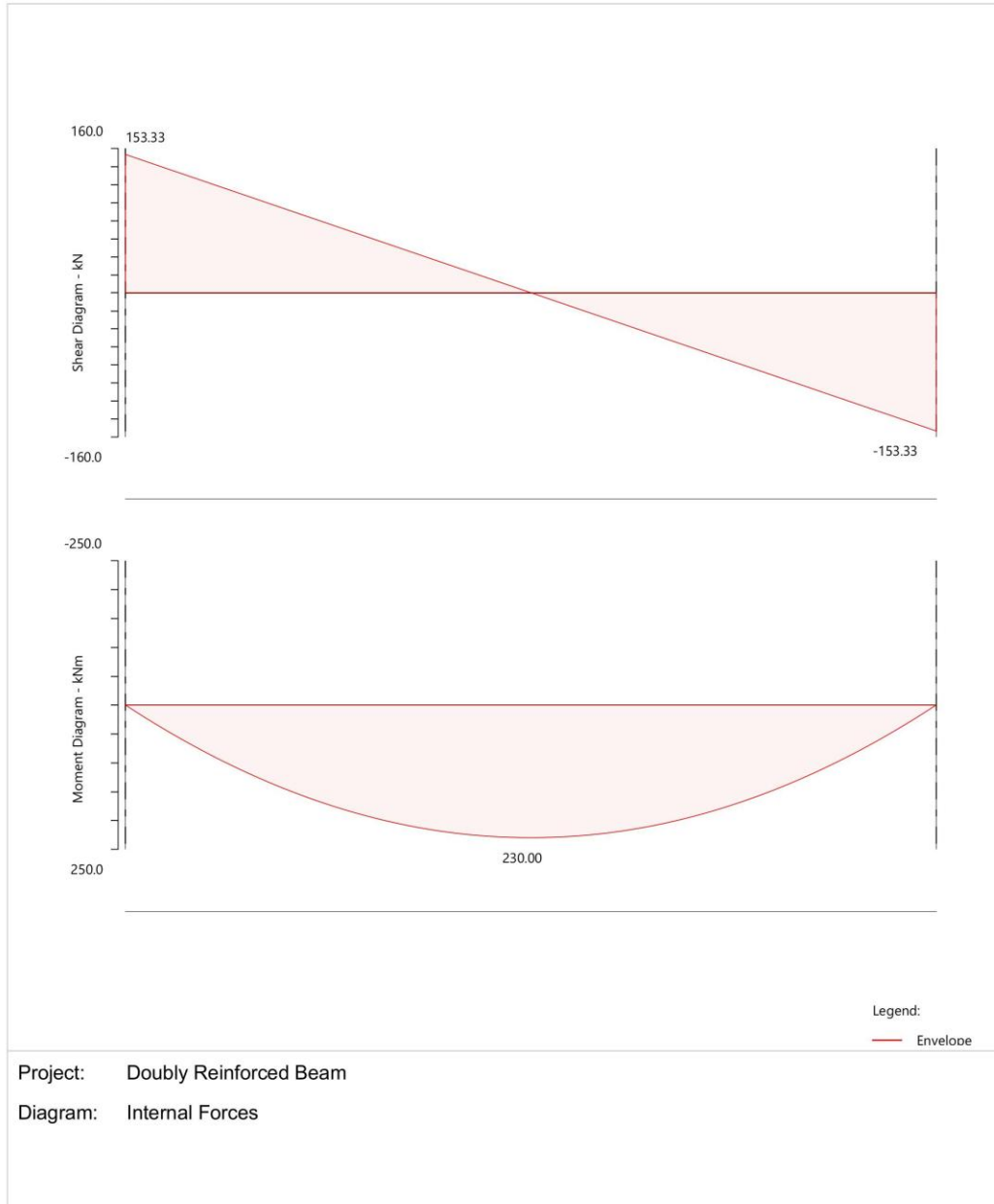
4.2. Loads - Case A - Live



STRUCTUREPOINT - spBeam v10.00 (TM)
Licensed to: StructurePoint, LLC. License ID: 00000-0000000-4-1C985-1C985
C:\StructurePoint\spBeam\DE-Doubly-Reinforced-Beam-CSA-14.slbx

Page | 10
12/29/2025
12:47 PM

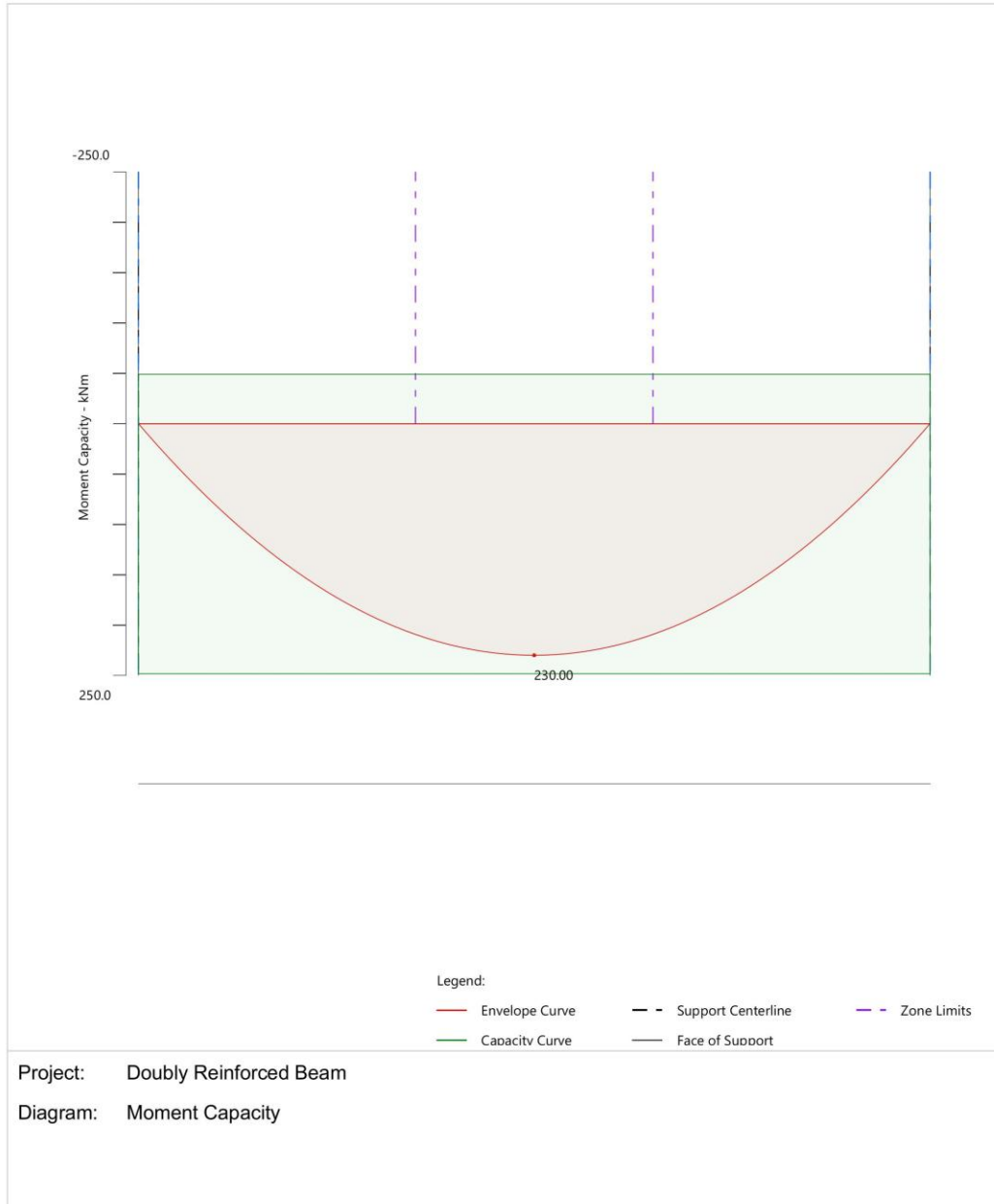
4.3. Internal Forces



STRUCTUREPOINT - spBeam v10.00 (TM)
Licensed to: StructurePoint, LLC. License ID: 00000-0000000-4-1C985-1C985
C:\StructurePoint\spBeam\DE-Doubly-Reinforced-Beam-CSA-14.slbx

Page | 11
12/29/2025
12:47 PM

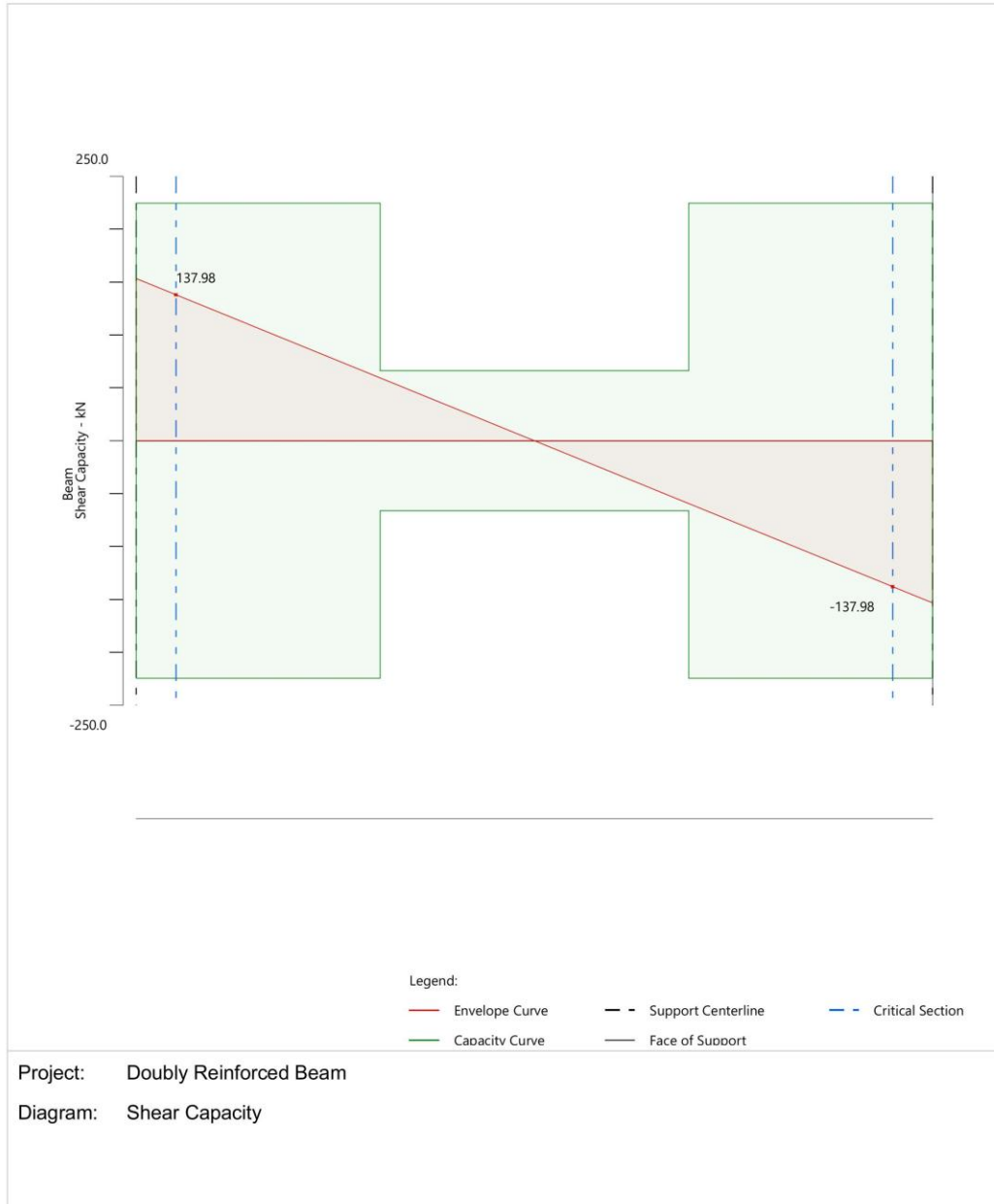
4.4. Moment Capacity



STRUCTUREPOINT - spBeam v10.00 (TM)
Licensed to: StructurePoint, LLC. License ID: 00000-0000000-4-1C985-1C985
C:\StructurePoint\spBeam\DE-Doubly-Reinforced-Beam-CSA-14.slbx

Page | 12
12/29/2025
12:47 PM

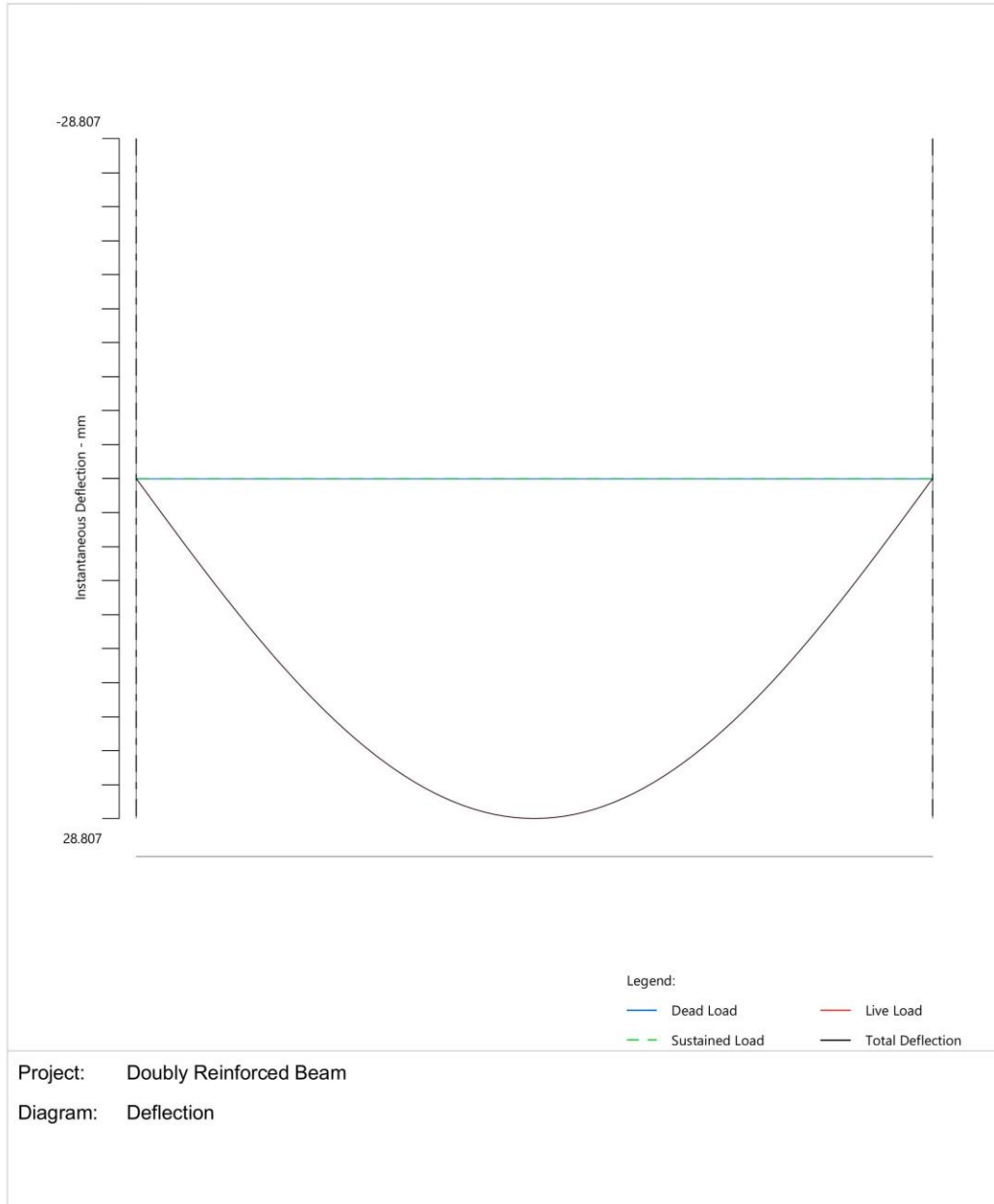
4.5. Shear Capacity



STRUCTUREPOINT - spBeam v10.00 (TM)
Licensed to: StructurePoint, LLC. License ID: 00000-0000000-4-1C985-1C985
C:\StructurePoint\spBeam\DE-Doubly-Reinforced-Beam-CSA-14.slbx

Page | 13
12/29/2025
12:47 PM

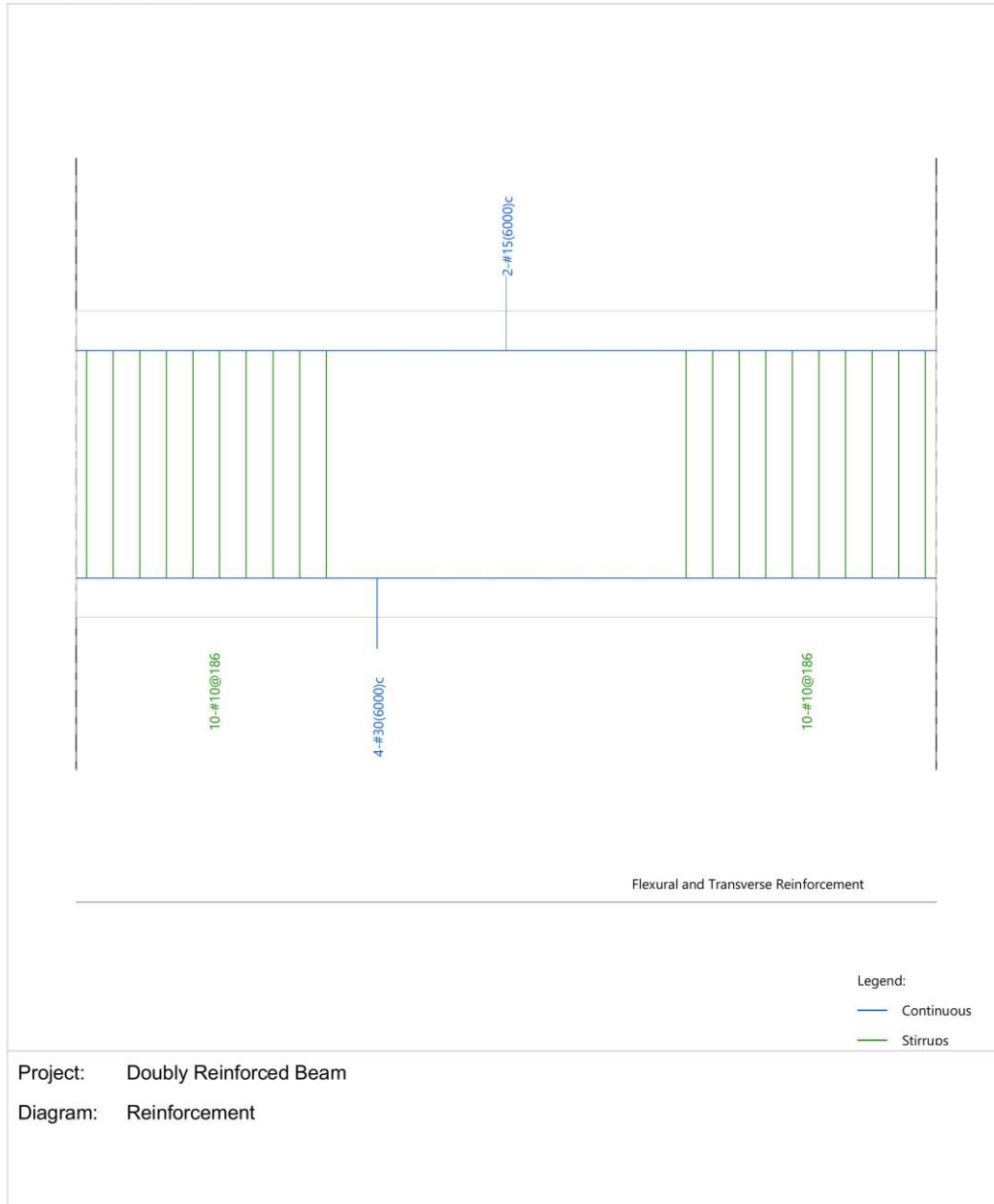
4.6. Deflection



STRUCTUREPOINT - spBeam v10.00 (TM)
Licensed to: StructurePoint, LLC. License ID: 00000-0000000-4-1C985-1C985
C:\StructurePoint\spBeam\DE-Doubly-Reinforced-Beam-CSA-14.slbx

Page | 14
12/29/2025
12:47 PM

4.7. Reinforcement



3. Comparison of Design Results

Table 1 – Comparison of Results				
Method	M_f (kN-m)	$A'_{s,top}$ (mm ²)	$A_{s,bot}$ (mm ²)	M_r (kN-m)
Reference	230.00	400.00	2,800.00	250.00*
Hand	230.00	400.00	2,800.00	249.07
spBeam	230.00	400.00	2,800.00	248.33
* Reference value for M_r is slightly different due to rounding.				

In all of the hand calculations and the reference used illustrated above, the results are in very good agreement with the automated exact results obtained from the [spBeam](#) program.

4. Conclusions & Observations

As shown in this example, using compression reinforcement helps in changing the beam failure mode from compression (brittle failure mode) to tension (ductile failure mode). The following shows other applications where the use of doubly reinforced beam sections can be helpful:

The use of compression reinforcement in beams reduces the long-term deflections of a beam subjected to sustained loads. Creep of the concrete in the compression zone transfers load from the concrete to the compression steel, reducing the stress in the concrete. Because of the lower compression stress in the concrete, it creeps less, leading to a reduction in sustained-load deflections.

In seismic regions or if moment redistribution is desired, doubly reinforced beam sections can be helpful since the beam ductility increases when compression reinforcement is used. The strain in the tension reinforcement at failure increases since the depth of the compression stress block decreases, resulting in more ductile behavior.

Compression reinforcement maybe be used for fabrication purposes. It is customary to provide small bars in the corners of the stirrups to hold the stirrups in place in the form and also to help anchor the stirrups. Such reinforcement may have a small effect on strength but can be considered in [spBeam](#) for investigation purposes.