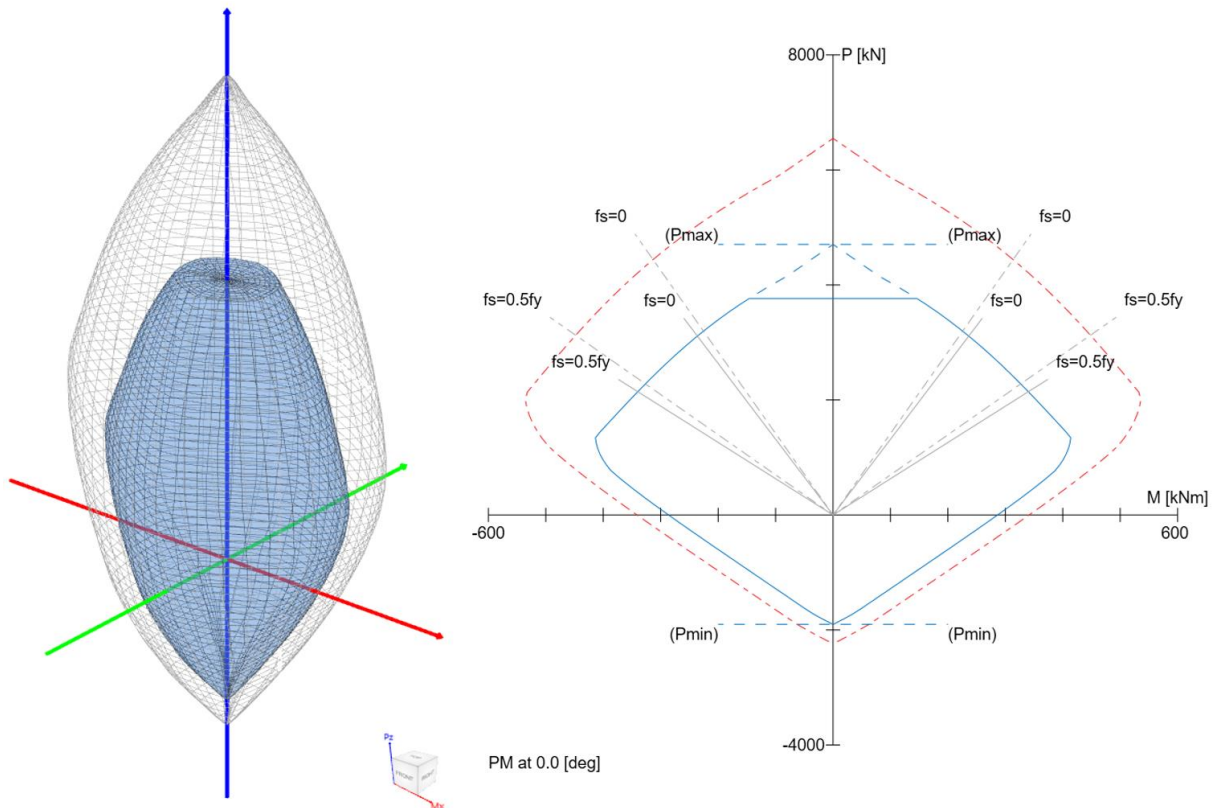
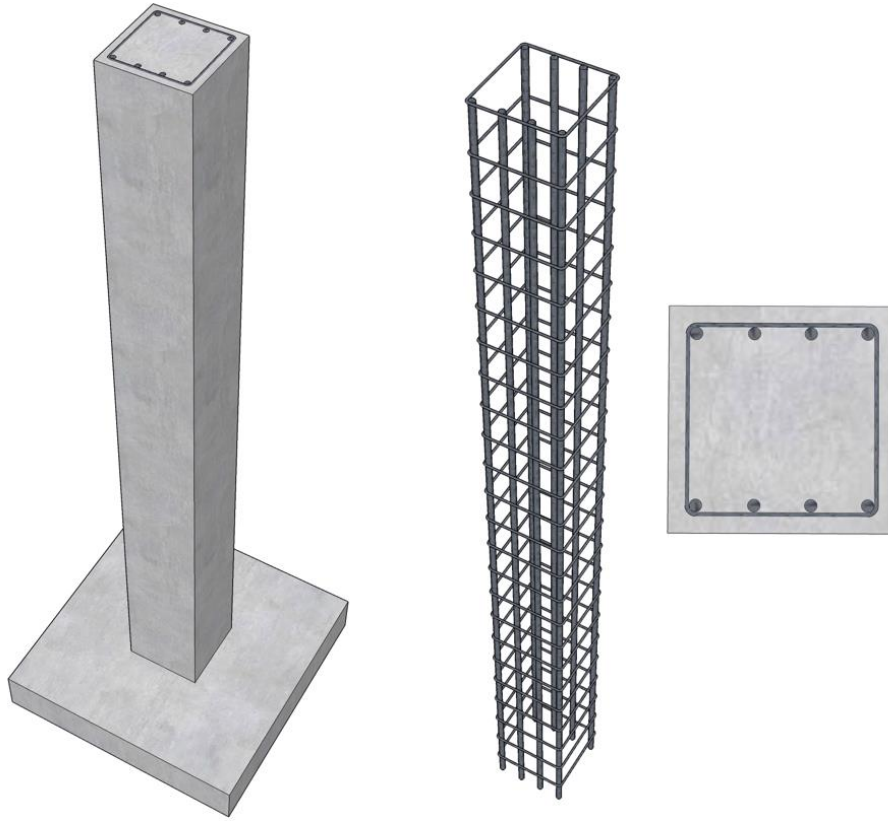


**Interaction Diagram - Tied Reinforced Concrete Column (CSA A23.3-19)**



### Interaction Diagram - Tied Reinforced Concrete Column (CSA A23.3-19)

Develop an interaction diagram for the square tied concrete column shown in the figure below about the x-axis using CSA A23.3-19 provisions. Determine six control points on the interaction diagram and compare the calculated values with exact values from the complete interaction diagram generated by [spColumn](#) engineering software program from [StructurePoint](#).

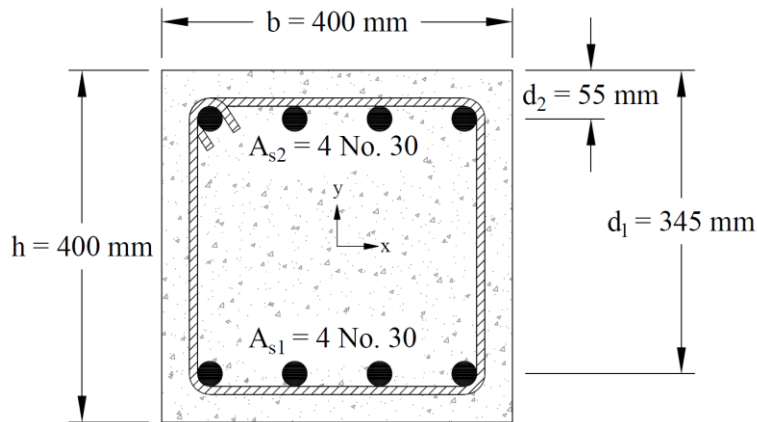


Figure 1 – Reinforced Concrete Column Cross-Section

## Contents

1. Pure Compression .....	3
1.1. Nominal axial resistance at zero eccentricity .....	3
1.2. Factored axial load resistance at zero eccentricity .....	3
1.3. Maximum factored axial load resistance .....	3
2. Bar Stress Near Tension Face of Member Equal to Zero, ( $\epsilon_s = f_s = 0$ ) .....	4
2.1. $c$ , $a$ , and strains in the reinforcement .....	4
2.2. Forces in the concrete and steel.....	5
2.3. $P_r$ and $M_r$ .....	5
3. Bar Stress Near Tension Face of Member Equal to $0.5 f_y$ , ( $f_s = -0.5 f_y$ ).....	6
3.1. $c$ , $a$ , and strains in the reinforcement .....	6
3.2. Forces in the concrete and steel.....	7
3.3. $P_r$ and $M_r$ .....	7
4. Bar Stress Near Tension Face of Member Equal to $f_y$ , ( $f_s = -f_y$ ).....	8
4.1. $c$ , $a$ , and strains in the reinforcement .....	8
4.2. Forces in the concrete and steel.....	9
4.3. $P_r$ and $M_r$ .....	9
5. Pure Bending.....	10
5.1. $c$ , $a$ , and strains in the reinforcement .....	10
5.2. Forces in the concrete and steel.....	11
5.3. $P_r$ and $M_r$ .....	11
6. Pure Tension.....	12
6.1. Strength under pure axial tension ( $P_{rt}$ ).....	12
6.2. Corresponding Moment ( $M_{rt}$ ).....	12
7. Column Interaction Diagram - spColumn Software.....	13
8. Summary and Comparison of Design Results .....	23
9. Conclusions & Observations .....	24

## Code

Design of Concrete Structures (CSA A23.3-19)

## References

- Reinforced Concrete Mechanics and Design, 1<sup>st</sup> Canadian Edition, 2000, James MacGregor and Fred Michael Bartlett, Prentice Hall Canada Inc., Example 11-1
- [spColumn Engineering Software Program Manual v10.10, STRUCTUREPOINT, 2023](#)

## Design Data

$$f_c' = 35 \text{ MPa}$$

$$f_y = 400 \text{ MPa}$$

Cover = 55 mm to bar center

Column 400 mm × 400 mm

Top reinforcement = 4 No. 30

Bottom reinforcement = 4 No. 30

## Solution

Use the traditional hand calculations approach to generate the interaction diagram for the concrete column section shown above by determining the following six control points:

Point 1: Pure compression

Point 2: Bar stress near tension face of member equal to zero, ( $f_s = 0$ )

Point 3: Bar stress near tension face of member equal to  $0.5 f_y$  ( $f_s = -0.5 f_y$ )

Point 4: Bar stress near tension face of member equal to  $f_y$  ( $f_s = -f_y$ )

Point 5: Pure bending

Point 6: Pure tension

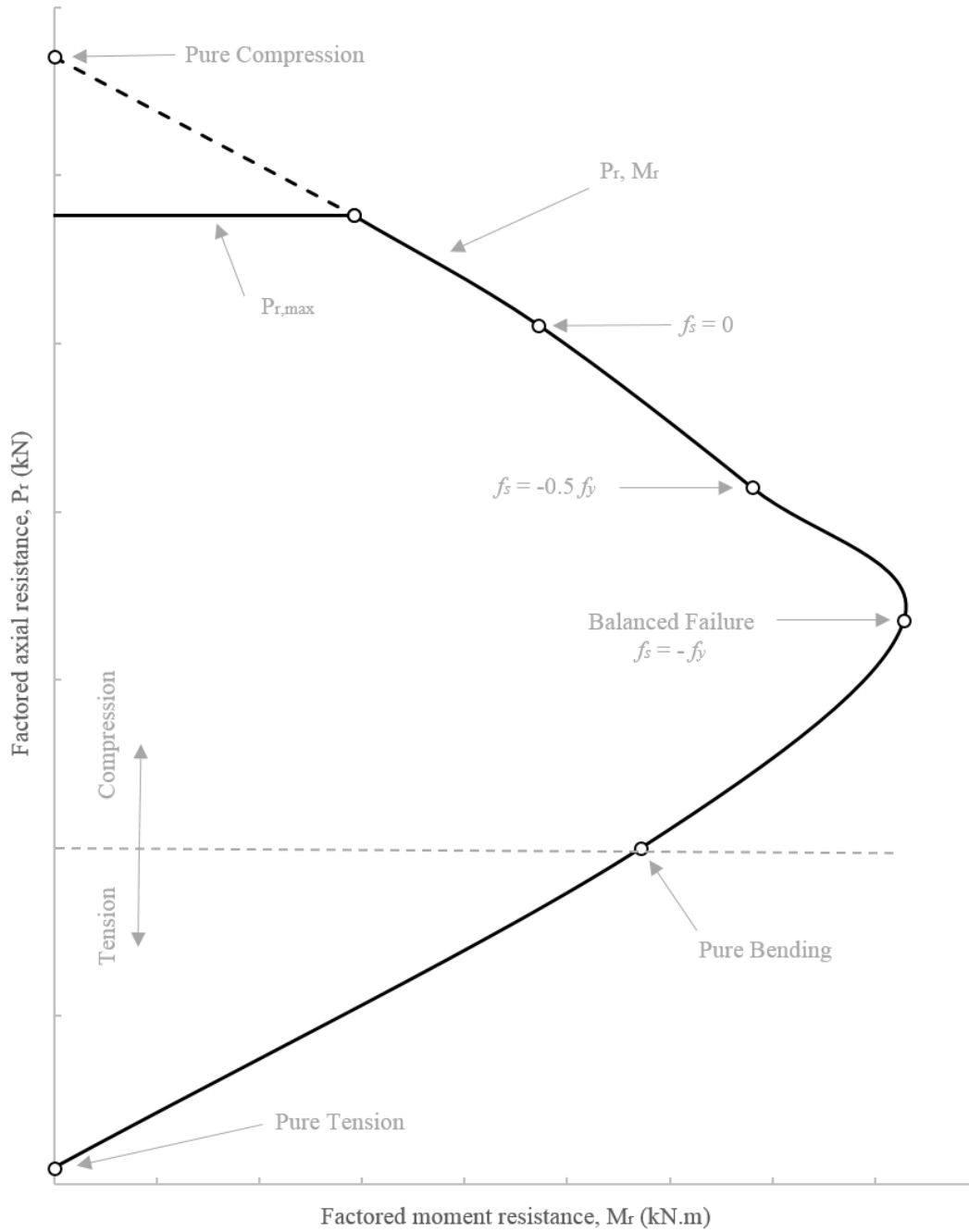


Figure 2 – Control Points

## 1. Pure Compression

### 1.1. Nominal axial resistance at zero eccentricity

$$P_o = \alpha_1 f'_c (A_g - A_{st}) + f_y A_{st}$$

$$P_o = 0.798 \times 35 \times (400 \times 400 - 8 \times 700) + 400 \times 8 \times 700 = 6,549.7 \text{ kN}$$

$$\text{Where } \alpha_1 = 0.85 - 0.0015 f'_c \geq 0.67$$

CSA A23.3-19 (Equation 10.1)

$$\alpha_1 = 0.85 - 0.0015 \times 35 = 0.798 \geq 0.67$$

### 1.2. Factored axial load resistance at zero eccentricity

Since this column is a tied column with steel strain in compression:

$$P_{ro} = \alpha_1 \phi_c f'_c (A_g - A_{st}) + \phi_s f_y A_{st}$$

CSA A23.3-19 (Equation 10.11)

$$P_{ro} = 0.798 \times 0.65 \times 35 \times (400 \times 400 - 8 \times 700) + 0.85 \times 400 \times 8 \times 700 = 4,705.3 \text{ kN}$$

Where:

$$\phi_c = 0.65$$

CSA A23.3-19 (8.4.2)

$$\phi_s = 0.85$$

CSA A23.3-19 (8.4.3(a))

### 1.3. Maximum factored axial load resistance

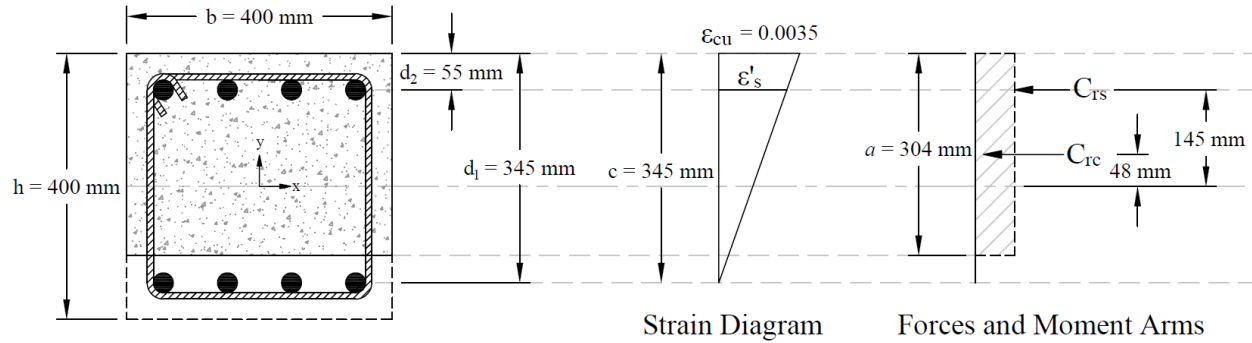
$$P_{r,max} = (0.2 + 0.002h) P_{ro} \leq 0.80 P_{ro}$$

CSA A23.3-19 (Equation 10.9)

$$P_{r,max} = (0.2 + 0.002 \times 400) \times 4,705.3 = 4,705.3 \text{ kN} \leq 0.80 P_{ro} = 0.80 \times 4,705.3 = 3,764.2 \text{ kN}$$

$$P_{r,max} = 3,764.2 \text{ kN}$$

**2. Bar Stress Near Tension Face of Member Equal to Zero, ( $\epsilon_s = f_s = 0$ )**



**Figure 3 – Strains, Forces, and Moment Arms ( $\epsilon_t = f_s = 0$ )**

Strain  $\epsilon_s$  is zero in the extreme layer of tension steel. This case is considered when calculating an interaction diagram because it marks the change from compression lap splices being allowed on all longitudinal bars, to the more severe requirement of tensile lap splices. **CSA A23.3-19 (12.15 and 16)**

**2.1. c, a, and strains in the reinforcement**

$$c = d_1 = 345 \text{ mm}$$

Where  $c$  is depth of the neutral axis measured from the compression edge of the column section.

**CSA A23.3-19 (3.2)**

$$a = \beta_1 \times c = 0.883 \times 345 = 304 \text{ mm}$$

**CSA A23.3-19 (10.1.7)**

Where:

$a$  = Depth of equivalent rectangular stress block

**CSA A23.3-19 (3.2)**

$$\beta_1 = 0.97 - 0.0025 \times f'_c = 0.97 - 0.0025 \times 35 = 0.883 > 0.67$$

**CSA A23.3-19 (Equation 10.2)**

$$\epsilon_s = 0$$

$$\phi_c = 0.65$$

**CSA A23.3-19 (8.4.2)**

$$\phi_s = 0.85$$

**CSA A23.3-19 (8.4.3(a))**

$$\epsilon_{cu} = 0.0035$$

**CSA A23.3-19 (10.1.3)**

$$\epsilon'_s = (c - d_2) \times \frac{\epsilon_{cu}}{c} = (345 - 55) \times \frac{0.0035}{345} = 0.00294 \text{ (Compression)} > \epsilon_y = \frac{F_y}{E_s} = \frac{400}{200,000} = 0.00200$$

2.2. Forces in the concrete and steel

$$C_{rc} = \alpha_1 \times \phi_c \times f'_c \times a \times b = 0.798 \times 0.65 \times 35 \times 304 \times 400 = 2,209.6 \text{ kN} \quad \text{CSA A23.3-19 (10.1.7)}$$

$$f_s = 0 \text{ kN} \rightarrow T_{rs} = \phi_s \times f_s \times A_{s1} = 0 \text{ kN}$$

Since  $\epsilon'_s > \epsilon_y \rightarrow$  compression reinforcement has yielded

$$\therefore f'_s = f_y = 400 \text{ MPa}$$

The area of the reinforcement in this layer has been included in the area ( $ab$ ) used to compute  $C_{rc}$ . As a result, it is necessary to subtract  $\alpha_1 \phi_c f'_c$  from  $\phi_s f'_s$  before computing  $C_{rs}$ :

$$C_{rs} = (\phi_s \times f'_s - \alpha_1 \times \phi_c \times f'_c) \times A_{s2} = (0.85 \times 400 - 0.798 \times 0.65 \times 35) \times 2,800 = 901.2 \text{ kN}$$

2.3.  $P_r$  and  $M_r$

$$P_r = C_{rc} + C_{rs} - T_{rs} = 2,209.6 + 901.2 - 0 = 3,110.8 \text{ kN}$$

$$M_r = C_{rc} \times \left( \frac{h}{2} - \frac{a}{2} \right) + C_{rs} \times \left( \frac{h}{2} - d_2 \right) + T_{rs} \times \left( d_1 - \frac{h}{2} \right)$$

$$M_r = 2,209.6 \times \left( \frac{400}{2} - \frac{304}{2} \right) + 901.2 \times \left( \frac{400}{2} - 55 \right) + 0 \times \left( 345 - \frac{400}{2} \right) = 236.22 \text{ kN-m}$$



### 3. Bar Stress Near Tension Face of Member Equal to $0.5 f_y$ , ( $f_s = -0.5 f_y$ )

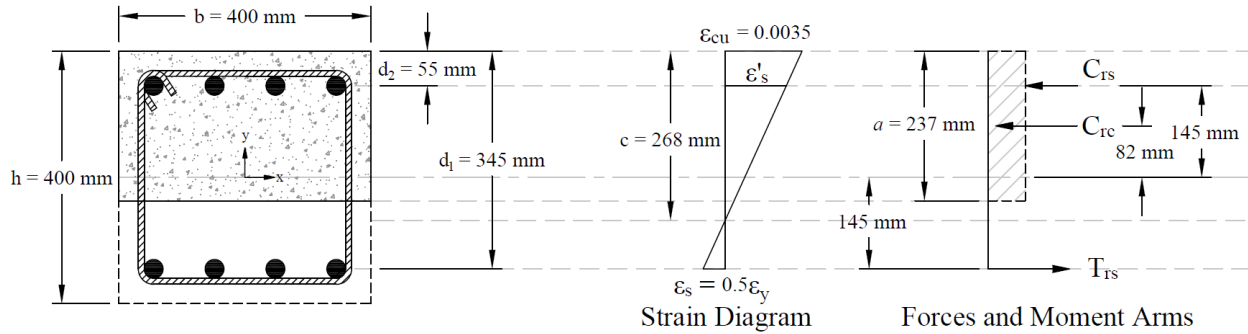


Figure 4 – Strains, Forces, and Moment Arms ( $f_s = -0.5 f_y$ )

#### 3.1. $c$ , $a$ , and strains in the reinforcement

$$\varepsilon_y = \frac{F_y}{E_s} = \frac{400}{200,000} = 0.00200$$

$$\varepsilon_s = \frac{\varepsilon_y}{2} = \frac{0.00200}{2} = 0.00100 < \varepsilon_y \rightarrow \text{tension reinforcement has not yielded}$$

$$\phi_c = 0.65$$

CSA A23.3-19 (8.4.2)

$$\phi_s = 0.85$$

CSA A23.3-19 (8.4.3(a))

$$\varepsilon_{cu} = 0.0035$$

CSA A23.3-19 (10.1.3)

$$c = \frac{d_1}{\varepsilon_s + \varepsilon_{cu}} \times \varepsilon_{cu} = \frac{345}{0.00100 + 0.0035} \times 0.0035 = 268 \text{ mm}$$

Where  $c$  is depth of the neutral axis measured from the compression edge of the column section.

CSA A23.3-19 (3.2)

$$a = \beta_1 \times c = 0.883 \times 268 = 237 \text{ mm}$$

CSA A23.3-19 (10.1.7)

Where:

$a$  = Depth of equivalent rectangular stress block

CSA A23.3-19 (3.2)

$$\beta_1 = 0.97 - 0.0025 \times f'_c = 0.97 - 0.0025 \times 35 = 0.883 > 0.67$$

CSA A23.3-19 (Equation 10.2)

$$\varepsilon'_s = (c - d_2) \times \frac{\varepsilon_{cu}}{c} = (268 - 55) \times \frac{0.0035}{268} = 0.00278 \text{ (Compression)} > \varepsilon_y$$

3.2. Forces in the concrete and steel

$$C_{rc} = \alpha_1 \times \phi_c \times f'_c \times a \times b = 0.798 \times 0.65 \times 35 \times 237 \times 400 = 1,718.5 \text{ kN} \quad \text{CSA A23.3-19 (10.1.7)}$$

$$f_s = \varepsilon_s \times E_s = 0.00100 \times 200,000 = 200 \text{ MPa}$$

$$T_{rs} = \phi_s \times f_s \times A_{s1} = 0.85 \times 200 \times 2,800 = 476.0 \text{ kN}$$

Since  $\varepsilon'_s > \varepsilon_y \rightarrow$  compression reinforcement has yielded

$$\therefore f'_s = f_y = 400 \text{ MPa}$$

The area of the reinforcement in this layer has been included in the area ( $ab$ ) used to compute  $C_{rc}$ . As a result, it is necessary to subtract  $\alpha_1 \phi_c f'_c$  from  $\phi_s f'_s$  before computing  $C_{rs}$ :

$$C_{rs} = (\phi_s \times f'_s - \alpha_1 \times \phi_c \times f'_c) \times A_{s2} = (0.85 \times 400 - 0.798 \times 0.65 \times 35) \times 2,800 = 901.2 \text{ kN}$$

3.3.  $P_r$  and  $M_r$

$$P_r = C_{rc} + C_{rs} - T_{rs} = 1,718.5 + 901.2 - 476.0 = 2,143.7 \text{ kN}$$

$$M_r = C_{rc} \times \left( \frac{h}{2} - \frac{a}{2} \right) + C_{rs} \times \left( \frac{h}{2} - d_2 \right) + T_{rs} \times \left( d_1 - \frac{h}{2} \right)$$

$$M_r = 1,718.5 \times \left( \frac{400}{2} - \frac{237}{2} \right) + 901.2 \times \left( \frac{400}{2} - 55 \right) + 476.0 \times \left( 345 - \frac{400}{2} \right) = 339.92 \text{ kN-m}$$

#### 4. Bar Stress Near Tension Face of Member Equal to $f_y$ , ( $f_s = -f_y$ )

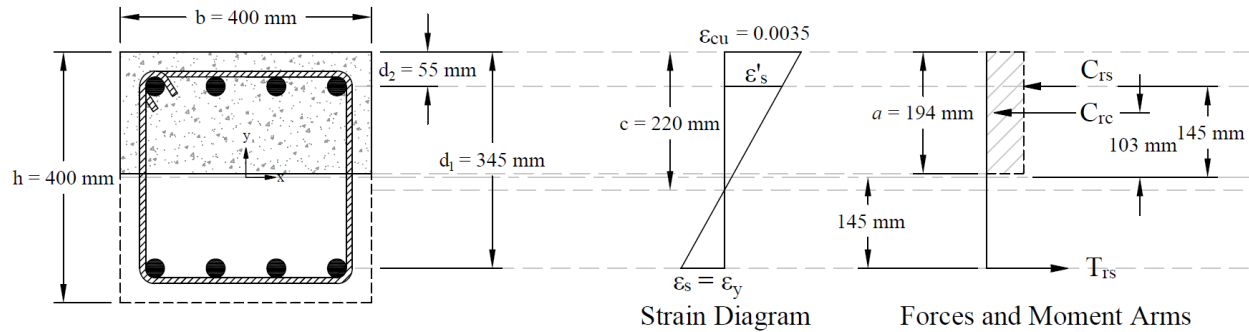


Figure 5 – Strains, Forces, and Moment Arms ( $f_s = -f_y$ )

This strain distribution is called the balanced failure case and the compression-controlled strain limit. It marks the change from compression failures originating by crushing of the compression surface of the section, to tension failures initiated by yield of longitudinal reinforcement.

##### 4.1. c, a, and strains in the reinforcement

$$\varepsilon_y = \frac{F_y}{E_s} = \frac{400}{200,000} = 0.00200$$

$$\varepsilon_s = \varepsilon_y = 0.00200 \rightarrow \text{tension reinforcement has yielded}$$

$$\phi_c = 0.65$$

CSA A23.3-19 (8.4.2)

$$\phi_s = 0.85$$

CSA A23.3-19 (8.4.3(a))

$$\varepsilon_{cu} = 0.0035$$

CSA A23.3-19 (10.1.3)

$$c = \frac{d_1}{\varepsilon_s + \varepsilon_{cu}} \times \varepsilon_{cu} = \frac{345}{0.00200 + 0.0035} \times 0.0035 = 220 \text{ mm}$$

Where  $c$  is depth of the neutral axis measured from the compression edge of the column section.

CSA A23.3-19 (3.2)

$$a = \beta_1 \times c = 0.883 \times 220 = 194 \text{ mm}$$

CSA A23.3-19 (10.1.7)

Where:

$$a = \text{Depth of equivalent rectangular stress block}$$

CSA A23.3-19 (3.2)

$$\beta_1 = 0.97 - 0.0025 \times f'_c = 0.97 - 0.0025 \times 35 = 0.883 > 0.67$$

CSA A23.3-19 (Equation 10.2)

$$\varepsilon'_s = (c - d_2) \times \frac{\varepsilon_{cu}}{c} = (220 - 55) \times \frac{0.0035}{220} = 0.00262 \text{ (Compression)} > \varepsilon_y$$

4.2. Forces in the concrete and steel

$$C_{rc} = \alpha_1 \times \phi_c \times f'_c \times a \times b = 0.798 \times 0.65 \times 35 \times 194 \times 400 = 1,406.1 \text{ kN} \quad \text{CSA A23.3-19 (10.1.7)}$$

$$f_s = f_y = 400 \text{ MPa}$$

$$T_{rs} = \phi_s \times f_s \times A_{s1} = 0.85 \times 400 \times 2,800 = 952.0 \text{ kN}$$

Since  $\epsilon'_s > \epsilon_y \rightarrow$  compression reinforcement has yielded

$$\therefore f'_s = f_y = 400 \text{ MPa}$$

The area of the reinforcement in this layer has been included in the area ( $ab$ ) used to compute  $C_{rc}$ . As a result, it is necessary to subtract  $\alpha_1 \phi_c f'_c$  from  $\phi_s f'_s$  before computing  $C_{rs}$ :

$$C_{rs} = (\phi_s \times f'_s - \alpha_1 \times \phi_c \times f'_c) \times A_{s2} = (0.85 \times 400 - 0.798 \times 0.65 \times 35) \times 2,800 = 901.2 \text{ kN}$$

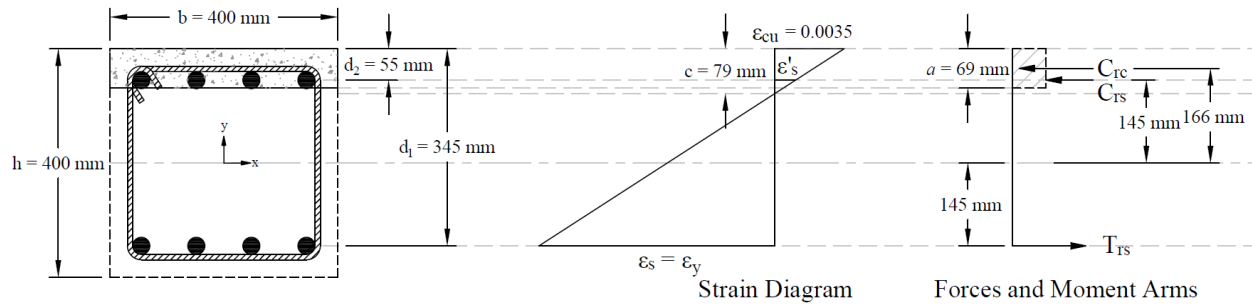
4.3.  $P_r$  and  $M_r$

$$P_r = C_{rc} + C_{rs} - T_{rs} = 1,406.1 + 901.2 - 952.0 = 1,355.3 \text{ kN}$$

$$M_r = C_{rc} \times \left( \frac{h}{2} - \frac{a}{2} \right) + C_{rs} \times \left( \frac{h}{2} - d_2 \right) + T_{rs} \times \left( d_1 - \frac{h}{2} \right)$$

$$M_r = 1,406.1 \times \left( \frac{400}{2} - \frac{194}{2} \right) + 901.2 \times \left( \frac{400}{2} - 55 \right) + 952.0 \times \left( 345 - \frac{400}{2} \right) = 413.72 \text{ kN-m}$$

## 5. Pure Bending



**Figure 6 – Strains, Forces, and Moment Arms (Pure Moment)**

This corresponds to the case where the factored axial load resistance,  $P_r$ , is equal to zero. Iterative procedure is used to determine the factored moment resistance as follows:

### 5.1. c, a, and strains in the reinforcement

Try  $c = 78.56$  mm

Where  $c$  is depth of the neutral axis measured from the compression edge of the column section.

**CSA A23.3-19 (3.2)**

$$a = \beta_1 \times c = 0.883 \times 78.56 = 69 \text{ mm}$$

**CSA A23.3-19 (10.1.7)**

Where:

$$\beta_1 = 0.97 - 0.0025 \times f'_c = 0.97 - 0.0025 \times 35 = 0.883 > 0.67$$

**CSA A23.3-19 (Equation 10.2)**

$$\epsilon_{cu} = 0.0035$$

**CSA A23.3-19 (10.1.3)**

$$\epsilon_y = \frac{F_y}{E_s} = \frac{400}{200,000} = 0.00200$$

$$\epsilon_s = (d_1 - c) \times \frac{\epsilon_{cu}}{c} = (345 - 78.56) \times \frac{0.0035}{78.56} = 0.01187 \text{ (Tension)} > \epsilon_y \rightarrow \text{tension reinforcement has yielded}$$

$$\phi_c = 0.65$$

**CSA A23.3-19 (8.4.2)**

$$\phi_s = 0.85$$

**CSA A23.3-19 (8.4.3(a))**

$$\epsilon'_s = (c - d_2) \times \frac{\epsilon_{cu}}{c} = (78.56 - 55) \times \frac{0.0035}{78.56} = 0.00105 \text{ (Compression)} < \epsilon_y$$

5.2. Forces in the concrete and steel

$$C_{rc} = \alpha_1 \times \phi_c \times f'_c \times a \times b = 0.798 \times 0.65 \times 35 \times 69 \times 400 = 503.1 \text{ kN}$$

CSA A23.3-19 (10.1.7)

$$f_s = f_y = 400 \text{ MPa}$$

$$T_{rs} = \phi_s \times f_s \times A_{s1} = 0.85 \times 400 \times 2,800 = 952.0 \text{ kN}$$

Since  $\epsilon'_s < \epsilon_y \rightarrow$  compression reinforcement has not yielded

$$\therefore f'_s = \epsilon'_s \times E_s = 0.00105 \times 200,000 = 210 \text{ MPa}$$

The area of the reinforcement in this layer has been included in the area ( $ab$ ) used to compute  $C_{rc}$ . As a result, it is necessary to subtract  $\alpha_1 \phi_c f'_c$  from  $\phi_s f'_s$  before computing  $C_{rs}$ :

$$C_{rs} = (\phi_s \times f'_s - \alpha_1 \times \phi_c \times f'_c) \times A_{s2} = (0.85 \times 210 - 0.798 \times 0.65 \times 35) \times 2,800 = 448.8 \text{ kN}$$

5.3.  $P_r$  and  $M_r$

$$P_r = C_{rc} + C_{rs} - T_{rs} = 503.1 + 448.8 - 952.0 \approx 0 \text{ kN}$$

The assumption that  $c = 78.56 \text{ mm}$  is correct

$$M_r = C_{rc} \times \left( \frac{h}{2} - \frac{a}{2} \right) + C_{rs} \times \left( \frac{h}{2} - d_2 \right) + T_{rs} \times \left( d_1 - \frac{h}{2} \right)$$

$$M_r = 503.1 \times \left( \frac{400}{2} - \frac{69}{2} \right) + 448.8 \times \left( \frac{400}{2} - 55 \right) + 952.0 \times \left( 345 - \frac{400}{2} \right) = 286.31 \text{ kN-m}$$

## 6. Pure Tension

The final loading case to be considered is concentric axial tension. The strength under pure axial tension is computed by assuming that the section is completely cracked through and subjected to a uniform strain greater than or equal to the yield strain in tension. The strength under such a loading is equal to the yield strength of the reinforcement in tension.

### 6.1. Strength under pure axial tension ( $P_{rt}$ )

$$P_{rt} = \phi_s \times f_y \times (A_{s1} + A_{s2}) = 0.85 \times 400 \times (2,800 + 2,800) = 1,904.0 \text{ kN}$$

### 6.2. Corresponding Moment ( $M_{rt}$ )

Since the section is symmetrical

$$M_{rt} = 0.00 \text{ kN-m}$$

## 7. Column Interaction Diagram - spColumn Software

[spColumn](#) is a StructurePoint software program that performs the analysis and design of reinforced concrete sections subjected to axial force combined with uniaxial or biaxial bending. Using the provisions of the Strength Design Method and Unified Design Provisions, slenderness considerations are used for moment magnification due to second order effect (P-Delta) for sway and non-sway frames.

For this column section, investigation mode was used with no loads (the program will only report control points) and no slenderness considerations using CSA A23.3-19.

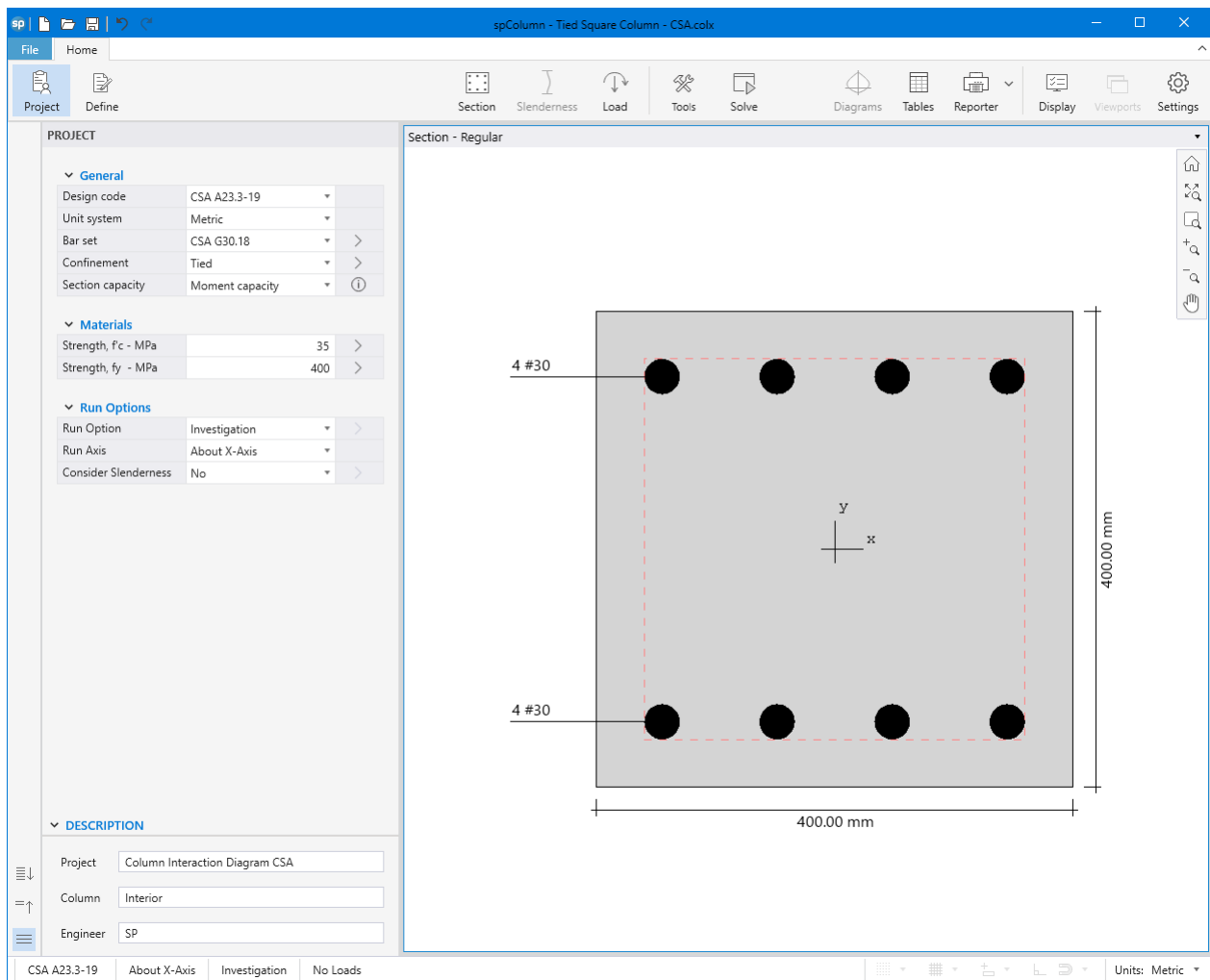


Figure 7 – spColumn Interface



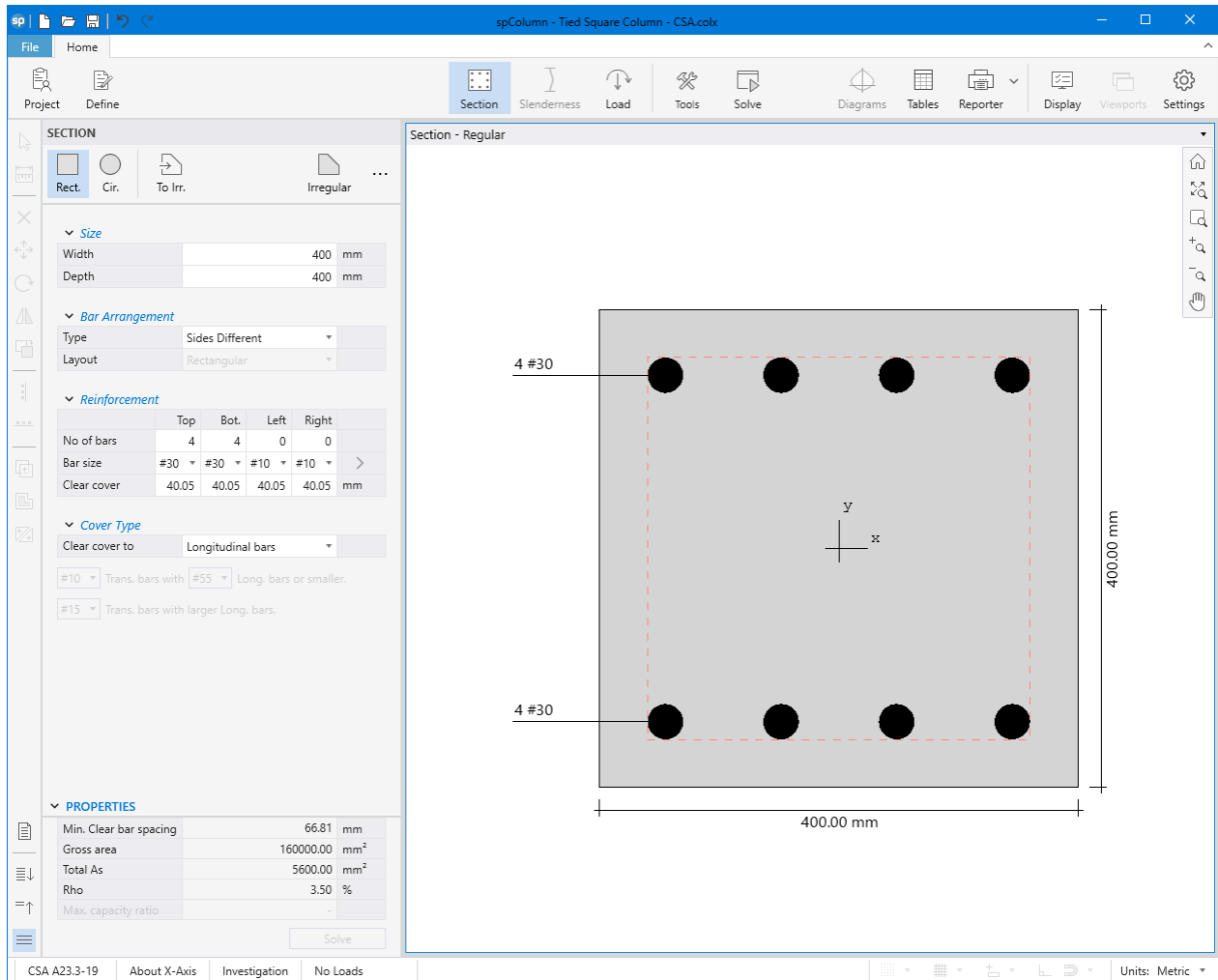


Figure 8 – spColumn Model Editor

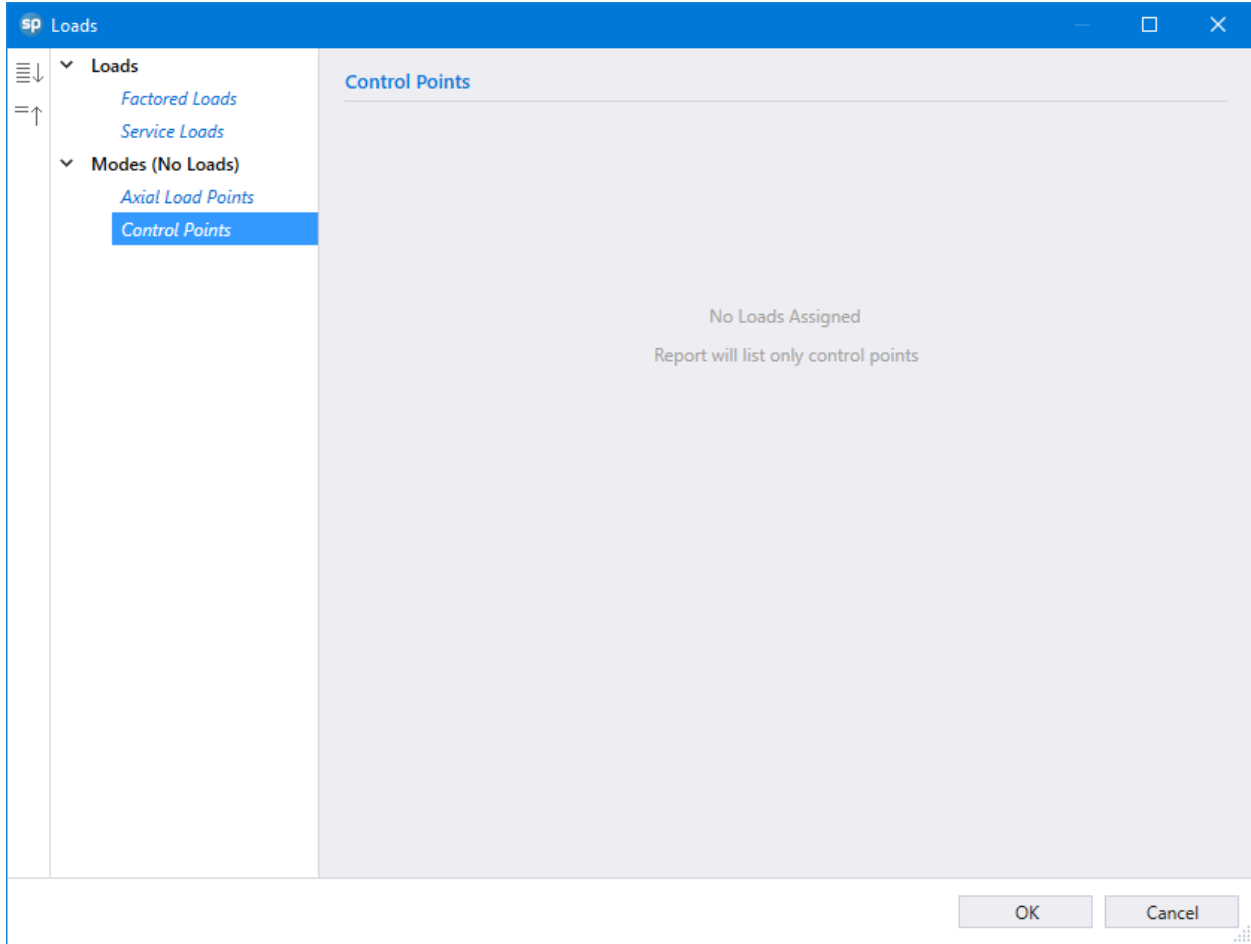


Figure 9 – Defining Loads / Modes (spColumn)

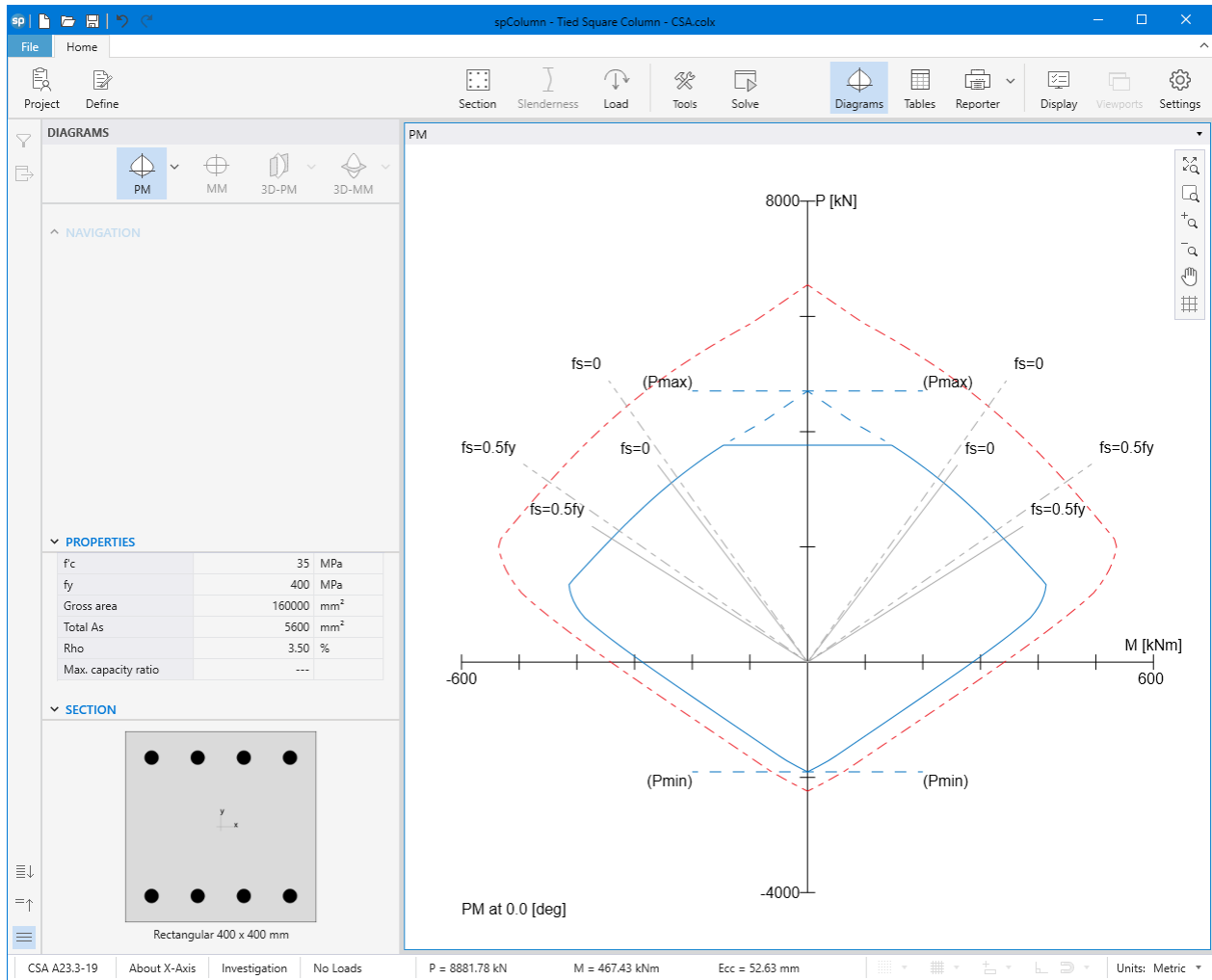


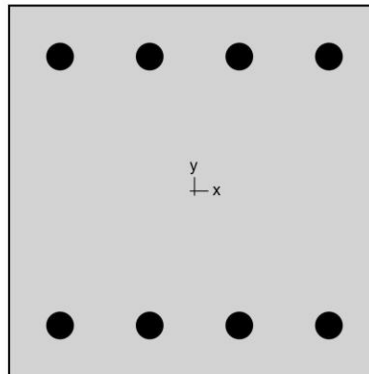
Figure 10 – Column P-M Interaction Diagram about the X-Axis (spColumn)



---

spColumn v10.10 (TM)  
Computer program for the Strength Design of Reinforced Concrete Sections  
Copyright - 1988-2023, STRUCTUREPOINT, LLC.  
All rights reserved

---



**StructurePoint**

Licensee stated below acknowledges that STRUCTUREPOINT (SP) is not and cannot be responsible for either the accuracy or adequacy of the material supplied as input for processing by the spColumn computer program. Furthermore, STRUCTUREPOINT neither makes any warranty expressed nor implied with respect to the correctness of the output prepared by the spColumn program. Although STRUCTUREPOINT has endeavored to produce spColumn error free the program is not and cannot be certified infallible. The final and only responsibility for analysis, design and engineering documents is the licensee's. Accordingly, STRUCTUREPOINT disclaims all responsibility in contract, negligence or other tort for any analysis, design or engineering documents prepared in connection with the use of the spColumn program. Licensed to: StructurePoint, LLC. License ID: 00000-0000000-4-20FC1-20FC1

## Contents

1. General Information .....	3
2. Material Properties .....	3
2.1. Concrete .....	3
2.2. Steel .....	3
3. Section .....	3
3.1. Shape and Properties .....	3
3.2. Section Figure .....	4
4. Reinforcement .....	4
4.1. Bar Set: CSA G30.18 .....	4
4.2. Confinement and Factors .....	4
4.3. Arrangement .....	4
4.4. Bars Provided .....	5
5. Control Points .....	5
6. Diagrams .....	6
6.1. PM at $\theta=0$ [deg] .....	6

## List of Figures

Figure 1: Column section .....	4
--------------------------------	---

STRUCTUREPOINT - spColumn v10.10 (TM)  
Licensed to: StructurePoint, LLC. License ID: 00000-0000000-4-20FC1-20FC1  
E:\StructurePoint\spColumn\Tied Square Column - CSA.colx

Page | 3  
7/19/2023  
4:53 PM

## 1. General Information

File Name	E:\StructurePoin...\Tied Square Column - CSA.colx
Project	Column Interaction Diagram CSA
Column	Interior
Engineer	SP
Code	CSA A23.3-19
Bar Set	CSA G30.18
Units	Metric
Run Option	Investigation
Run Axis	X - axis
Slenderness	Not Considered
Column Type	Structural
Capacity Method	Moment capacity

## 2. Material Properties

### 2.1. Concrete

Type	Standard
$f'_c$	35 MPa
$E_c$	28164.7 MPa
$f_c$	27.9125 MPa
$\epsilon_u$	0.0035 mm/mm
$\beta_1$	0.8825

### 2.2. Steel

Type	Standard
$f_y$	400 MPa
$E_s$	200000 MPa
$\epsilon_{ly}$	0.002 mm/mm

## 3. Section

### 3.1. Shape and Properties

Type	Rectangular
Width	400 mm
Depth	400 mm
$A_g$	160000 mm <sup>2</sup>
$I_x$	2.13333e+009 mm <sup>4</sup>
$I_y$	2.13333e+009 mm <sup>4</sup>
$r_x$	115.47 mm
$r_y$	115.47 mm
$X_o$	0 mm
$Y_o$	0 mm

### 3.2. Section Figure

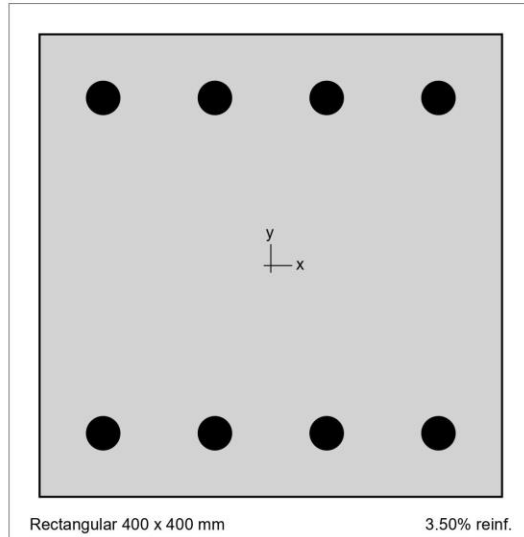


Figure 1: Column section

## 4. Reinforcement

### 4.1. Bar Set: CSA G30.18

Bar	Diameter mm	Area mm <sup>2</sup>	Bar	Diameter mm	Area mm <sup>2</sup>	Bar	Diameter mm	Area mm <sup>2</sup>
#10	11.30	100.00	#15	16.00	200.00	#20	19.50	300.00
#25	25.20	500.00	#30	29.90	700.00	#35	35.70	1000.00
#45	43.70	1500.00	#55	56.40	2500.00			

### 4.2. Confinement and Factors

Confinement type	Tied
For #55 bars or less	#10 ties
For larger bars	#15 ties
<b>Material Resistance Factors</b>	
Axial compression, (a)	0.8
Steel ( $\phi_s$ )	0.85
Concrete ( $\phi_c$ )	0.65
Minimum dimension, h	400 mm

### 4.3. Arrangement

Pattern	Sides different
Bar layout	Rectangular
Cover to	Longitudinal bars
Clear cover	---

STRUCTUREPOINT - spColumn v10.10 (TM)  
Licensed to: StructurePoint, LLC. License ID: 00000-0000000-4-20FC1-20FC1  
E:\StructurePoint\spColumn\Tied Square Column - CSA.colx

Page | 5  
7/19/2023  
4:53 PM

Bars	---
Total steel area, $A_s$	5600 mm <sup>2</sup>
Rho	3.50 %
Minimum clear spacing	67 mm

#### 4.4. Bars Provided

	Bars	Clear cover mm
Top	4 #30	40.05
Bottom	4 #30	40.05
Left	0 #10	40.05
Right	0 #10	40.05

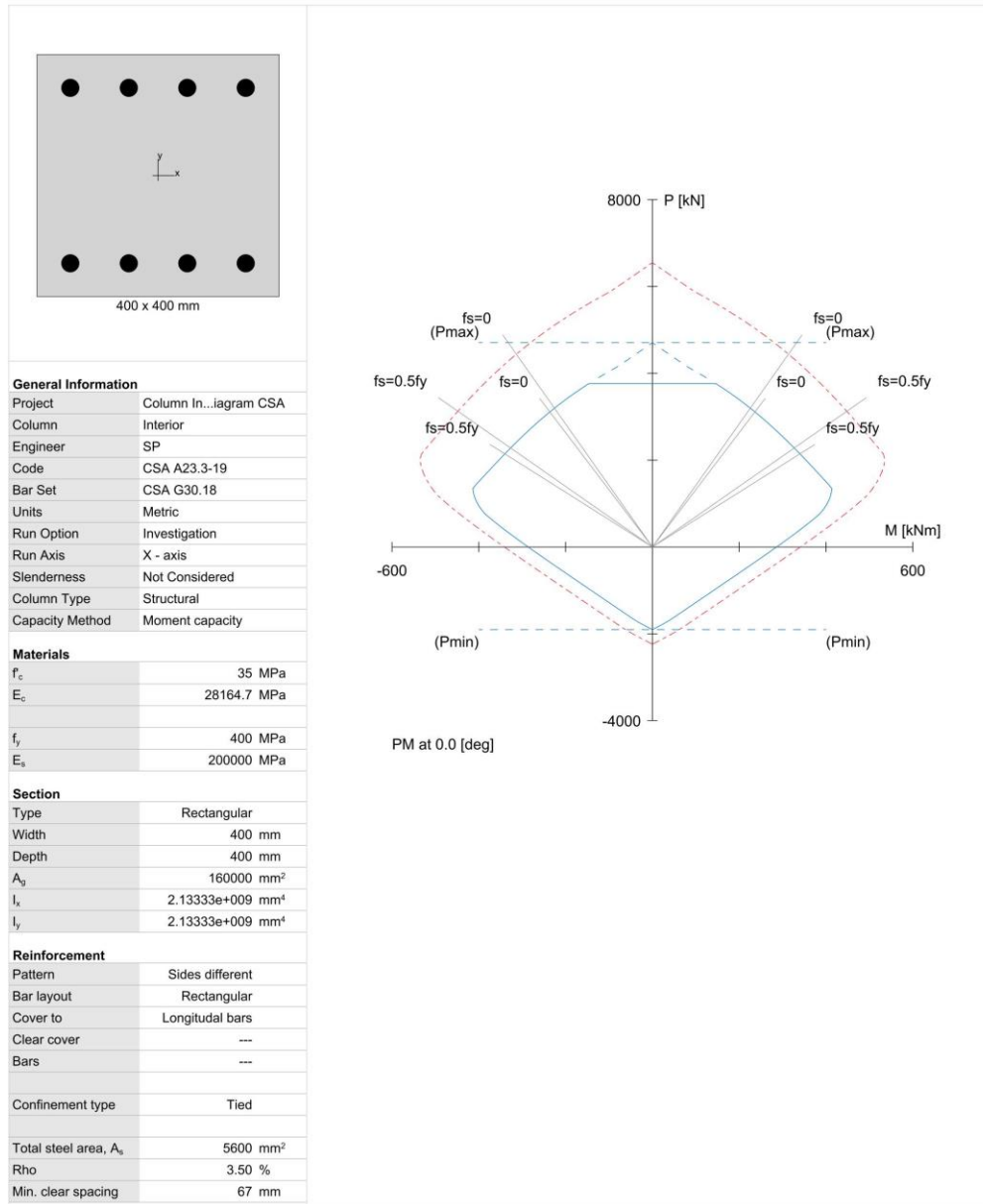
#### 5. Control Points

About Point	P kN	X-Moment kNm	Y-Moment kNm	NA Depth mm	$d_i$ Depth mm	$\epsilon_t$
X @ Max compression	4705.3	0.00	0.00	805	345	-0.00200
X @ Allowable comp.	3764.2	146.13	0.00	412	345	-0.00057
X @ $f_s = 0.0$	3110.8	236.22	0.00	345	345	0.00000
X @ $f_s = 0.5 f_y$	2143.7	339.92	0.00	268	345	0.00100
X @ Balanced point	1355.3	413.72	0.00	220	345	0.00200
X @ Pure bending	0.0	286.31	0.00	79	345	0.01187
X @ Max tension	-1904.0	0.00	0.00	0	345	9.99999
-X @ Max compression	4705.3	0.00	0.00	805	345	-0.00200
-X @ Allowable comp.	3764.2	-146.13	0.00	412	345	-0.00057
-X @ $f_s = 0.0$	3110.8	-236.22	0.00	345	345	0.00000
-X @ $f_s = 0.5 f_y$	2143.7	-339.92	0.00	268	345	0.00100
-X @ Balanced point	1355.3	-413.72	0.00	220	345	0.00200
-X @ Pure bending	0.0	-286.31	0.00	79	345	0.01187
-X @ Max tension	-1904.0	0.00	0.00	0	345	9.99999



## 6. Diagrams

### 6.1. PM at $\theta=0$ [deg]



## 8. Summary and Comparison of Design Results

Table 1 - Comparison of Results				
Support	$P_r$ , kN		$M_r$ , kN-m	
	Hand	spColumn	Hand	spColumn
Max compression	4705.3	4705.3	0.00	0.00
Allowable compression	3764.2	3764.2	---	---
$f_s = 0.0$	3110.8	3110.8	236.22	236.22
$f_s = 0.5 f_y$	2143.7	2143.7	339.92	339.92
Balanced point	1355.3	1355.3	413.72	413.72
Pure bending	0.0	0.0	286.31	286.31
Max tension	1904.0	1904.0	0.00	0.00

In all of the hand calculations illustrated above, the results are in precise agreement with the automated exact results obtained from the [spColumn](#) program.

### 9. Conclusions & Observations

The analysis of the reinforced concrete section performed by [spColumn](#) conforms to the provisions of the Strength Design Method and Unified Design Provisions with all conditions of strength satisfying the applicable conditions of equilibrium and strain compatibility.

In the calculation shown above a P-M interaction diagram was generated with moments about the X-Axis (Uniaxial bending). Since the reinforcement in the section is not symmetrical, a different P-M interaction diagram is needed for the other orthogonal direction about the Y-Axis (See the following Figure for the case where  $f_s = f_y$ ).

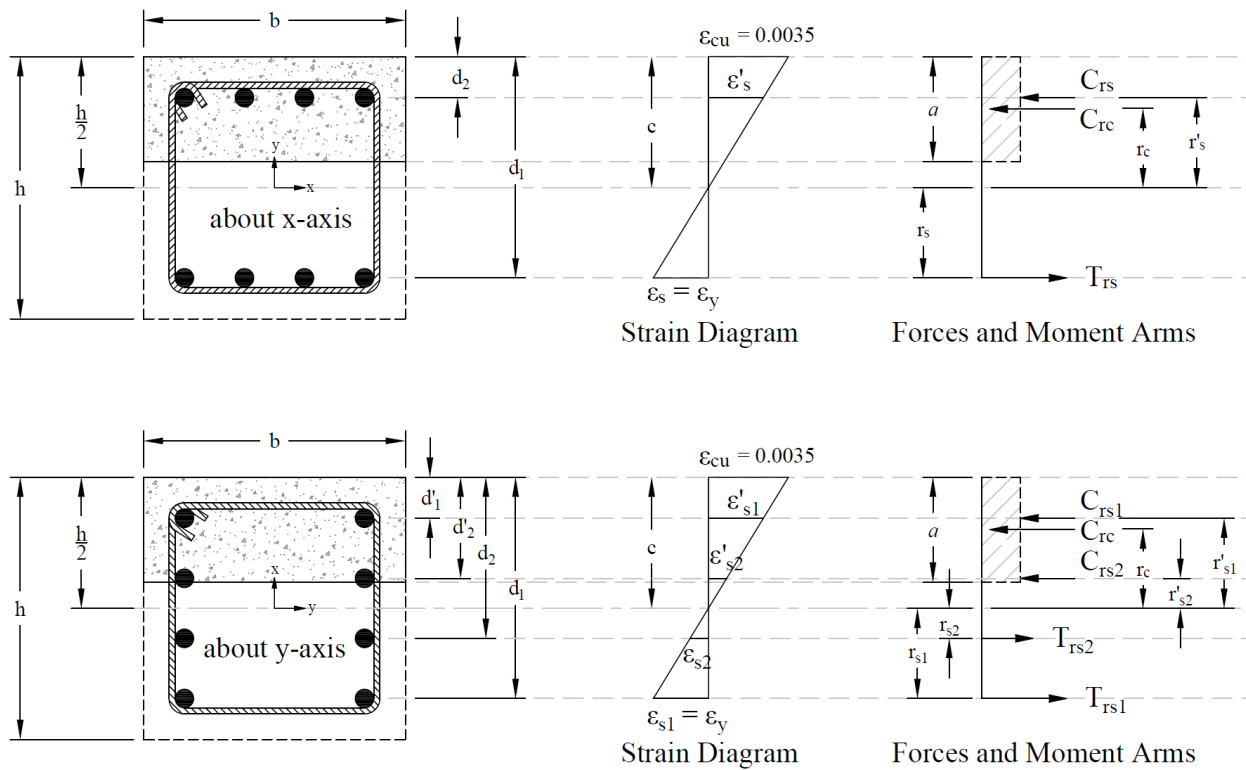


Figure 11 – Strains, Forces, and Moment Arms ( $f_s = - f_y$  Moments About x- and y-axis)

When running about the Y-Axis, we have 2 bars in 4 layers instead of 4 bars in just 2 layers (about X-Axis) resulting in a completely different interaction diagram as shown in the following Figure. Further differences in the interaction diagram in both directions can result if the column cross section geometry is irregular.

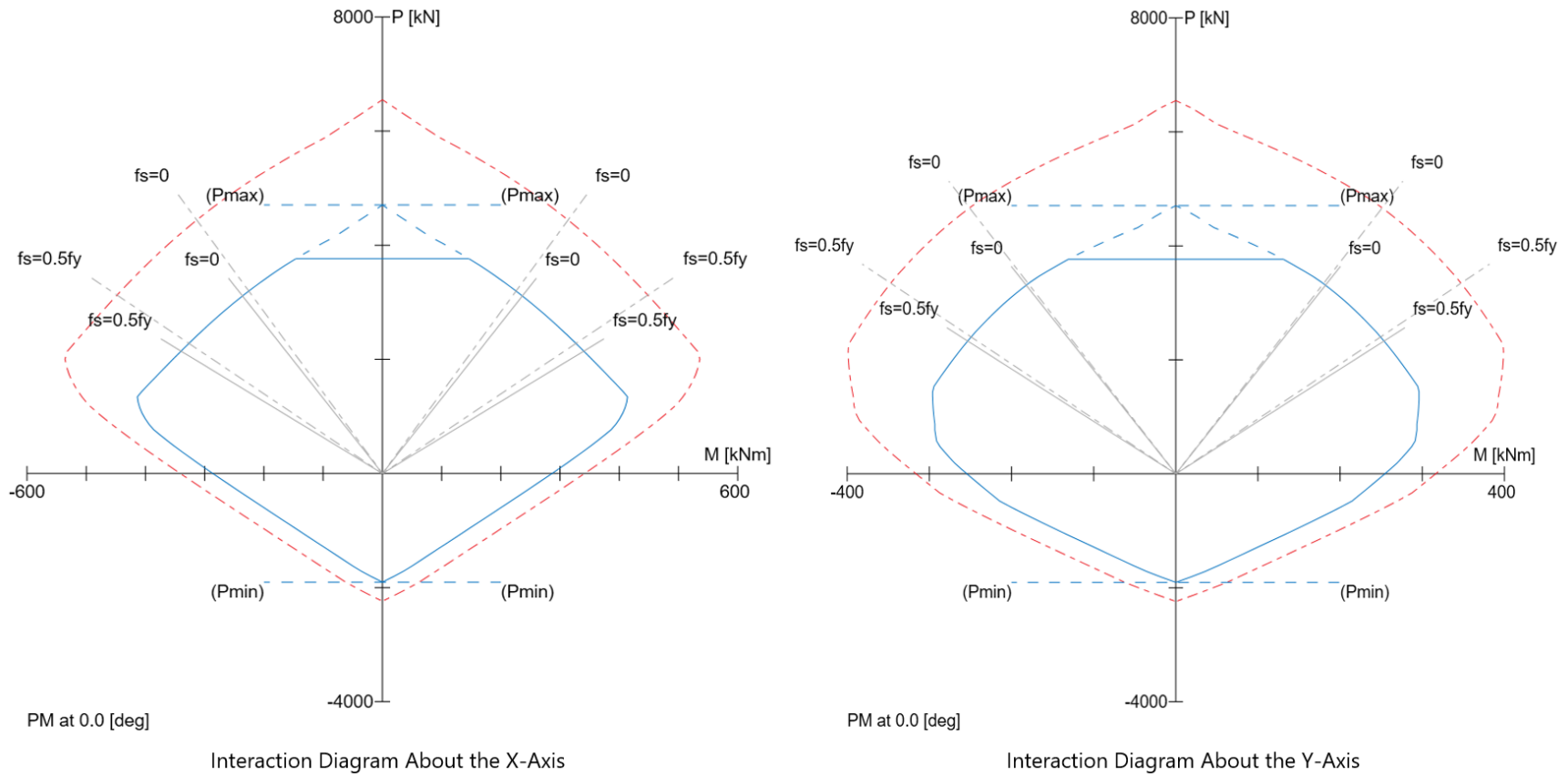


Figure 12 – Comparison of Column Interaction Diagrams about X-Axis and Y-Axis (spColumn)

In most building design calculations, such as the examples shown for [flat plate](#) or [flat slab](#) concrete floor systems, all building columns are subjected to  $M_x$  and  $M_y$  due to lateral forces and unbalanced moments from both directions of analysis. This requires an evaluation of the column P-M interaction diagram in two directions simultaneously (biaxial bending).

StructurePoint's [spColumn](#) program can also evaluate column sections in biaxial mode to produce the results shown in the following Figure for the column section in this example.

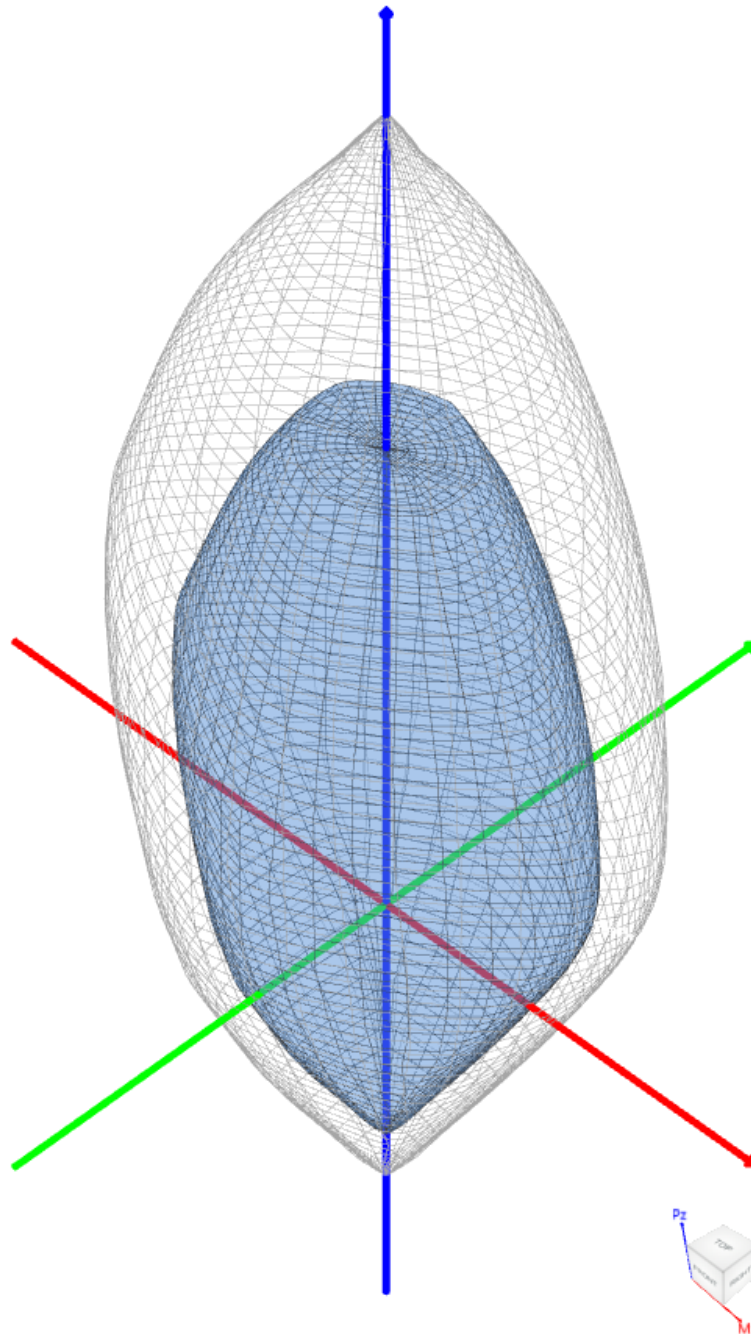


Figure 13 – Nominal & Design 3D Failure Surfaces (Biaxial) ([spColumn](#))

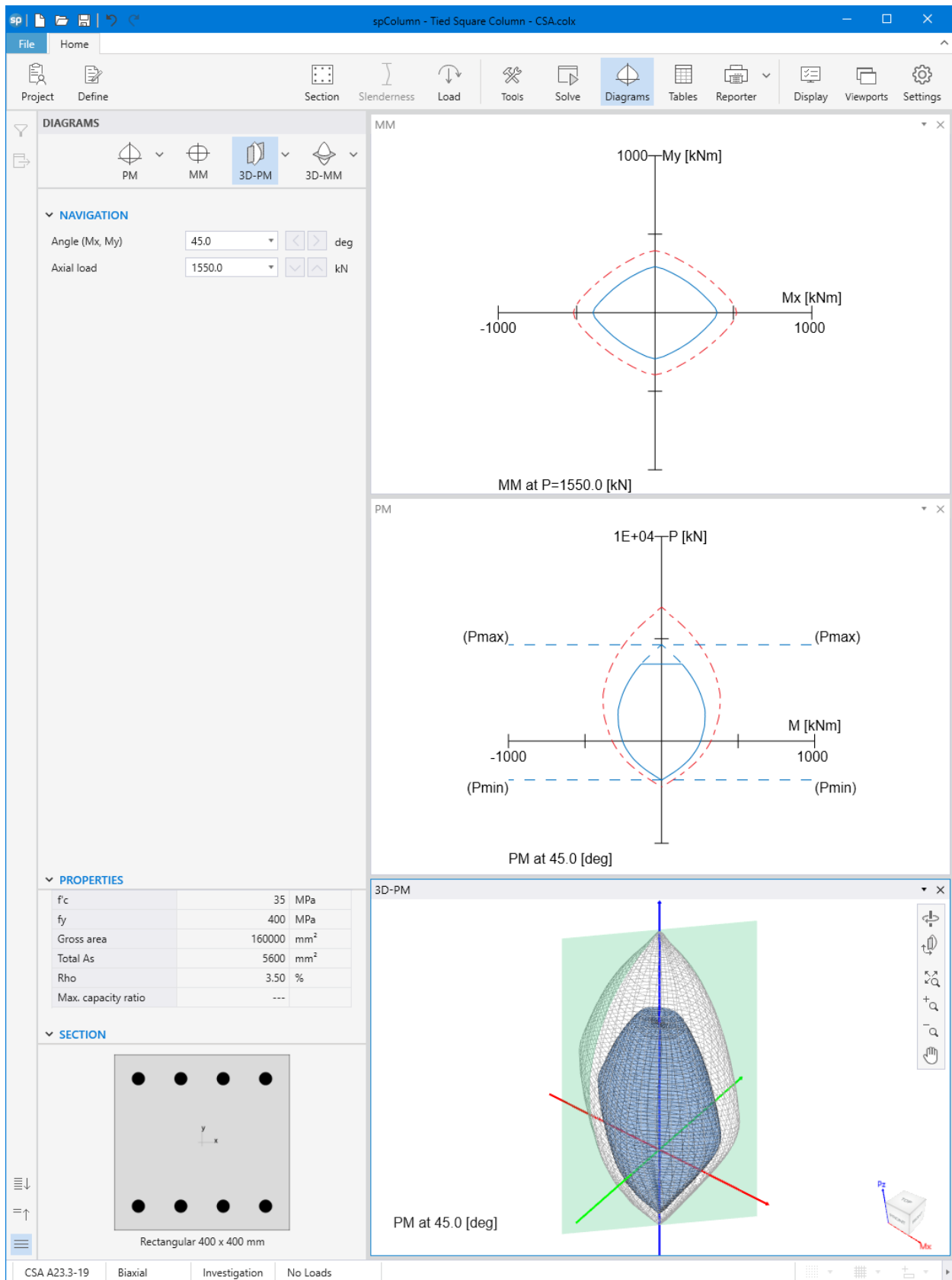


Figure 14 – Tied Column Interaction Diagram and 3D failure Surface Viewer (spColumn)

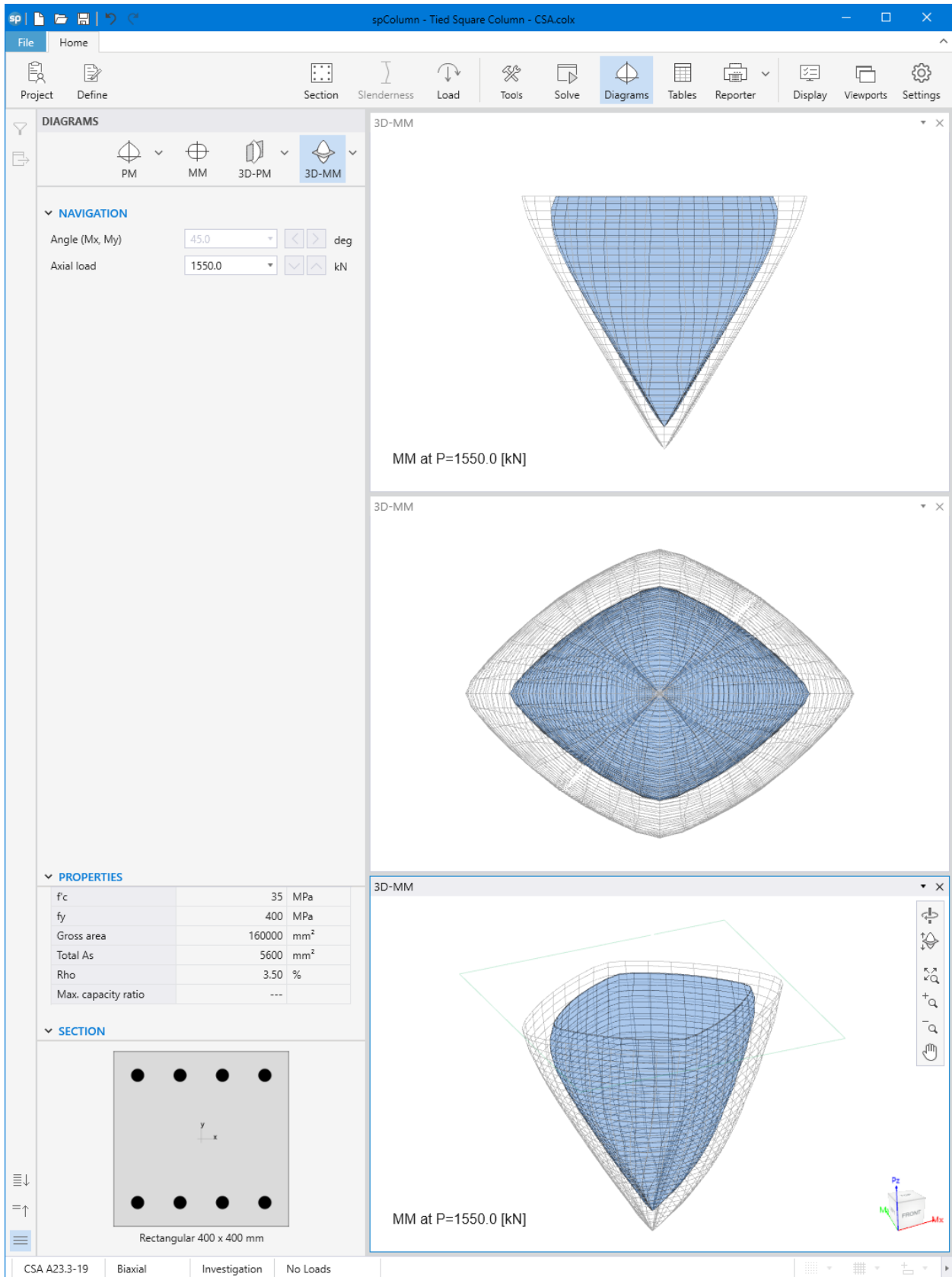


Figure 15 – Tied Column 3D Failure Surface with a Horizontal Plane Cut at P = 1,550.0 kN (spColumn)

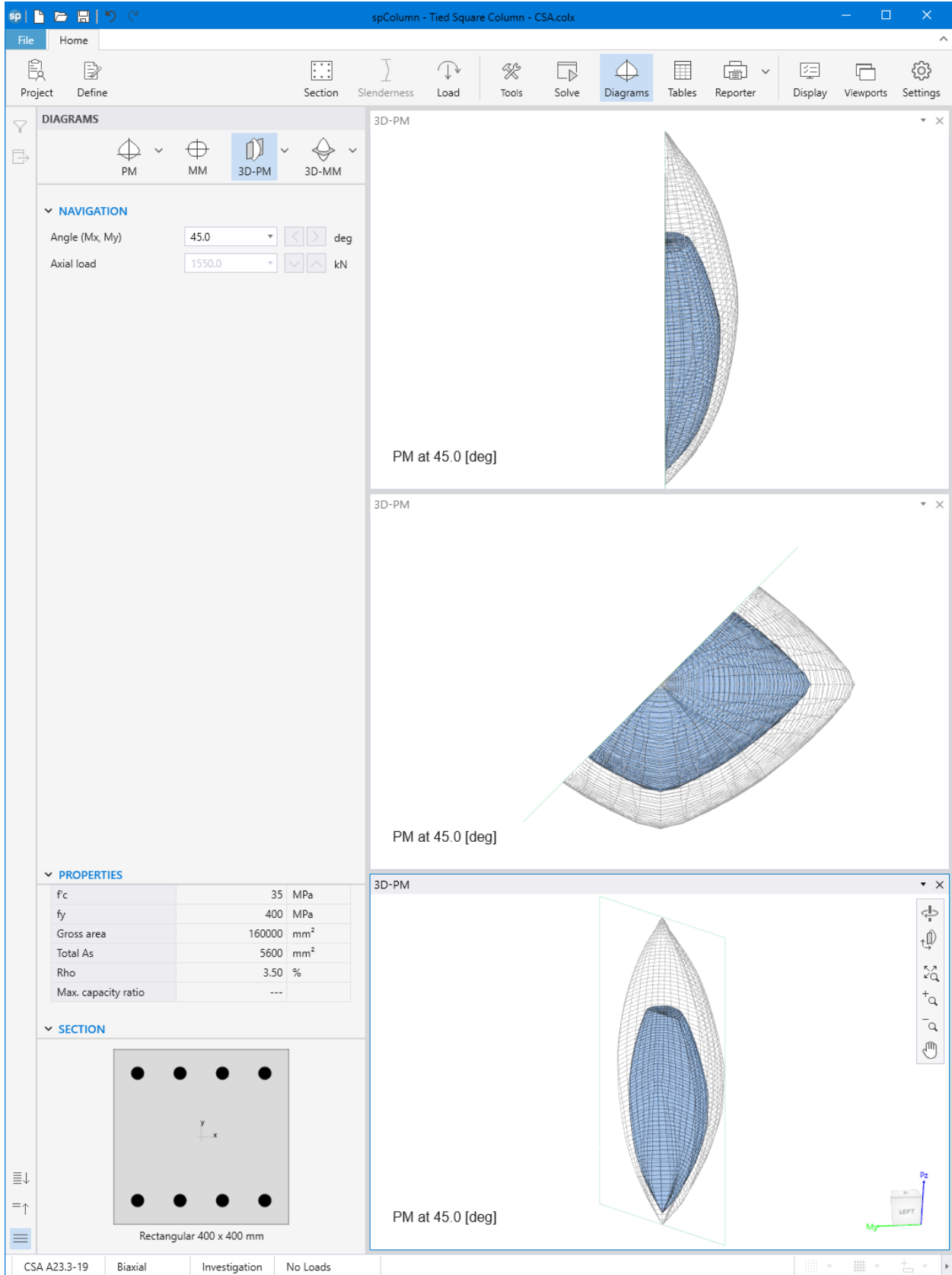


Figure 16 – Tied Column 3D Failure Surface with a Vertical Plane Cut at 45° (spColumn)